

New products

Pumping stations

 **KESSEL**

**Specify it!
Order it!
Install it!**
You will be glad you did.

Aqualift F Basic & Aqualift S Basic
for wastewater with or without sewage.



New



Made in Germany



Leading in drainage

Pumping stations

Aqualift F Basic

for wastewater with or without sewage.

The pumping stations *Aqualift F Basic* and *Aqualift S Basic* are the most modern entry level wastewater lifting stations on the market. Complete with a heavy duty chamber, new to market pumps and tool-free quick release connections only available at KESSEL – making the choice is now simple. Choose cutting-edge technology at an unbeatable price.

The pumping station *Aqualift F Basic* and *Aqualift S Basic* are available either as single pump Mono or a twin pump Duo systems. All models are float switch controlled and Tronic versions are equipped with a control unit.



1 Pumping station *Aqualift F Basic* 2 Wastewater drainage from building 3 Pressure pipe to sewer

& Aqualift S Basic

for wastewater without sewage.

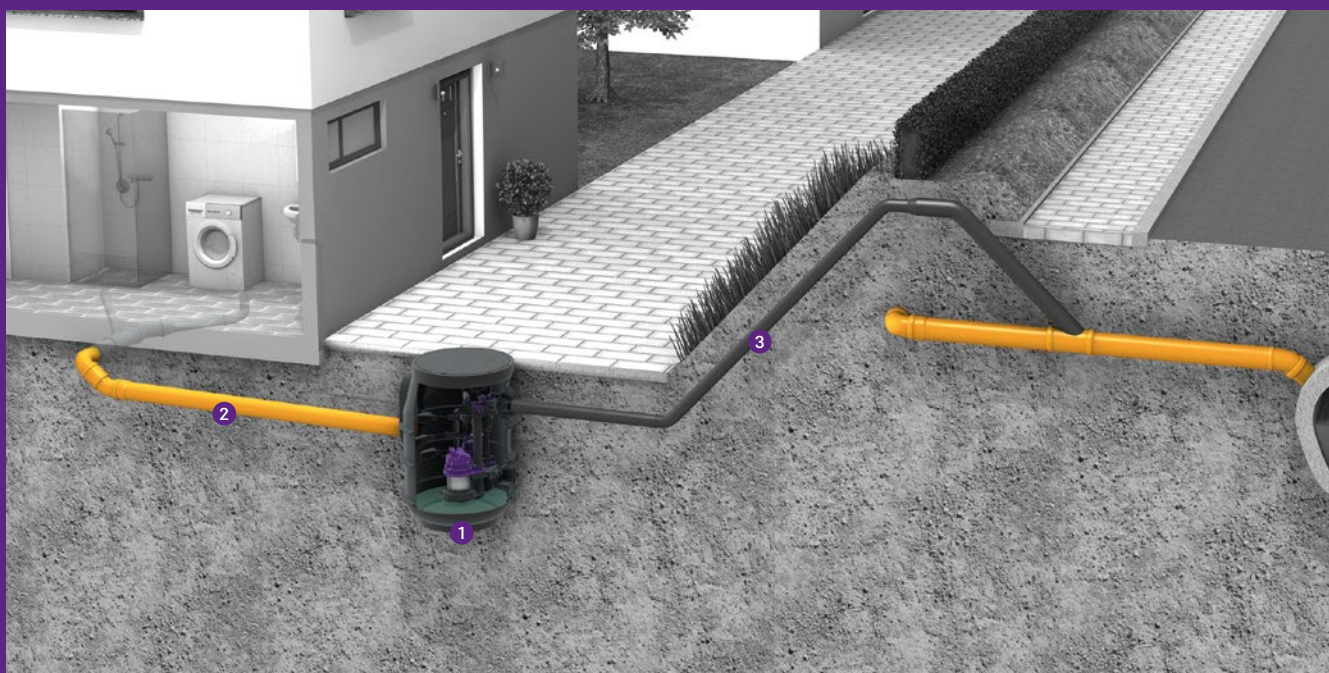
Pump(s) for Aqualift F Basic

The pumping station has either one or two STF 1300 pumps with 40 mm free passage.

Pump(s) for new Aqualift S Basic

The pumping station has either one or two GTF 600 or GTF 1250 pumps with 30 mm free passage.

New



① Pumping station Aqualift S Basic ② Wastewater drainage from building ③ Pressure pipe to sewer

Advantages for pumping stations

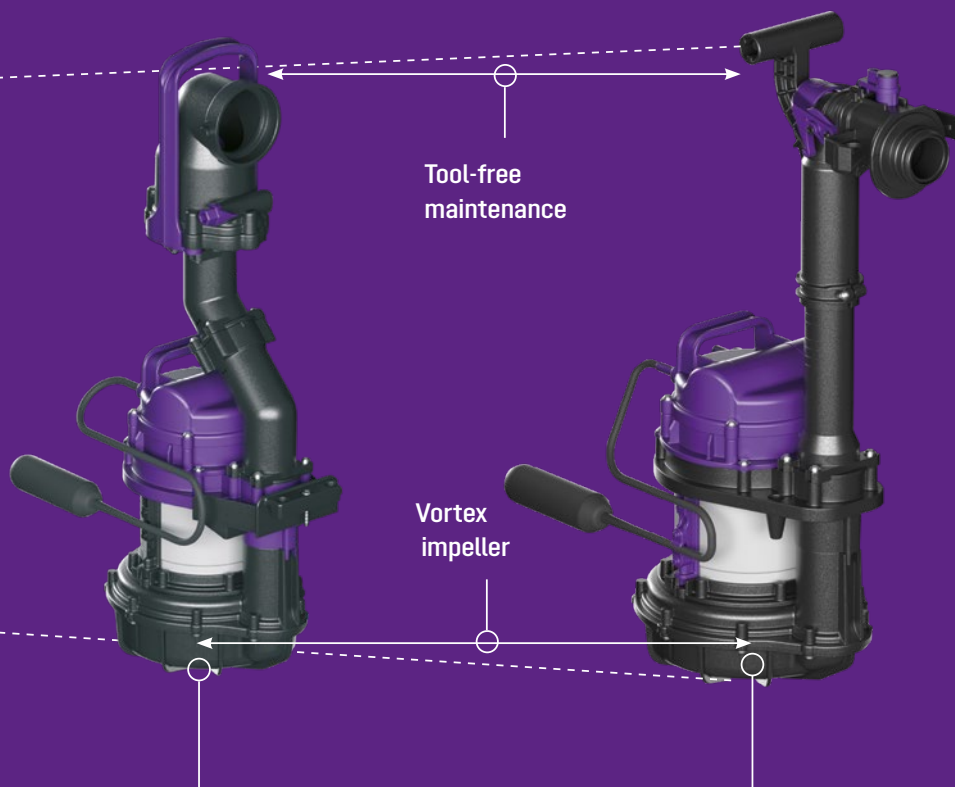


Aqualift F Basic & Aqualift S Basic

for wastewater with or without sewage.



Pressure pipe connection DN 50
(outer diameter OD 63mm)

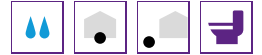


Aqualift F Basic
Mono or Duo STF 1300 pumps
with 40 mm free passage

Aqualift S Basic
Mono or Duo GTF 600 or GTF 1250 pumps
with 30 mm free passage

Pumping station *Aqualift F Basic*

For wastewater with or without sewage



Pump volume: 25 liters (Mono) /
60 liters (Tronic / Duo)

Polyethylene storage chamber for underground installation (installation depth max. 440 mm), drilling surfaces on three sides for inlet Ø 110/160 mm, pipe gasket and ventilation. With polymer cover, screwed, load class 300 kg.

Float switch controlled **single or twin removable wastewater pump(s)** with multi-vane vortex impeller for wastewater with or without sewage (open channel passage 40 mm). Pump is rated submersible (IP 68). Pressure pipe connection DN 50 (Ø 63 mm) with integrated non-return flap.

Control unit

Tronic versions include Basic control unit with self-diagnosis system (SDS) and battery buffering, control unit is splash proof (IP 54).

Note:

- A ventilation pipe must be provided for on site.
- Consider frost free depth of pressure pipe.
- For installations without explosion proof requirements.

➤ **Accessories:** page 6



Illustration shows Mono version Art. no. 829 710



Illustration shows Duo version Art. no. 828 711

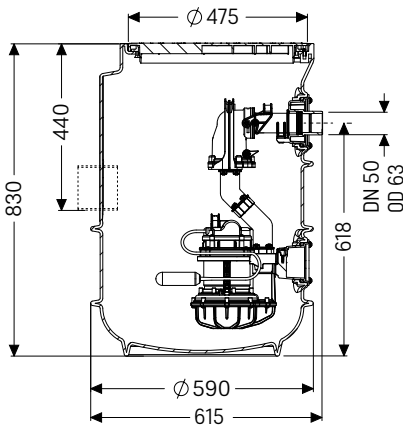


Illustration shows Mono version Art. no. 829 710

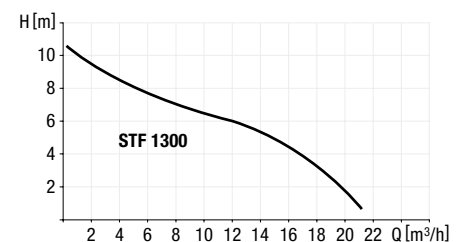
Mono version with one pump

STF pump	Level measurement	Art. no.
1300-S3	float switch (single)	829 710
1300-S3	float switch (Tronic)	829 711

Duo version with two pumps

STF pump	Level measurement	Art. no.
1300-S3	float switch (Tronic)	828 711

Pumping capacity



Pump type	Voltage	Amperage	Power (P1/P2)	RPM	Pumping capacity	Pumping height
STF 1300-S3-50%*	230 V ~ 50 Hz	6.0 A	1.3 kW / 0.8 kW	2.650 min ⁻¹	21 m ³ /h	max. 10 m

New pumping station *Aqualift S Basic*

For wastewater without sewage



Pump volume: 20 liters (Mono) /
60 liters (Tronic / Duo)

Polyethylene storage chamber for underground installation (installation depth max. 440 mm), drilling surfaces on three sides for inlet \varnothing 110/160 mm, pipe gasket and ventilation. With polymer cover, screwed, load class 300 kg.

Float switch controlled **single or twin removable wastewater pump(s)** with multi-vane vortex impeller for wastewater without sewage (open channel passage 30 mm). Pump is rated submersible (IP 68). Pressure pipe connection DN 40 (\varnothing 50 mm) or DN 50 (\varnothing 63 mm) with integrated non-return flap.

Control unit

Tronic versions include Basic control unit with self-diagnosis system (SDS) and battery buffering, control unit is splash proof (IP 54).

Note:

- A ventilation pipe must be provided for on site.
- Consider frost free depth of pressure pipe.
- For installations without explosion proof requirements.

➤ **Accessories:** page 6



Illustration shows Mono version Art. no. 829 810



Illustration shows Duo version Art. no. 828 851

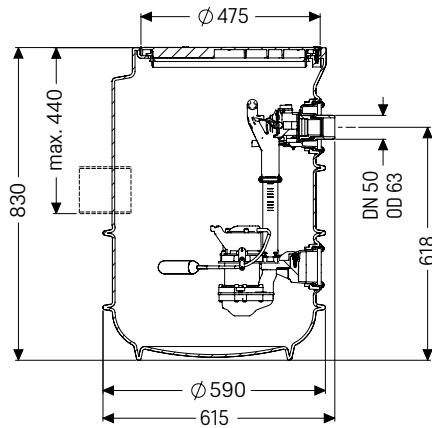


Illustration shows Mono version Art. no. 829 810

Mono version with one pump

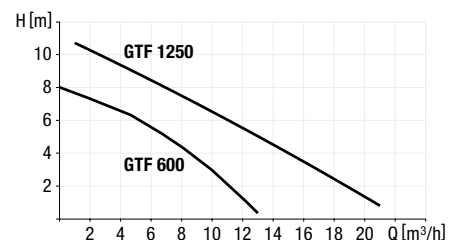
GTF pump	Level measurement	Art. no.
600-S1	float switch (single)	829 810
1250-S1	float switch (single)	829 850
600-S1	float switch (tronic)	829 811
1250-S1	float switch (tronic)	829 851

Duo version with two pumps

GTF pump	Level measurement	Art. no.
600-S1	float switch (tronic)	828 811
1250-S1	float switch (tronic)	828 851

Pump type	Voltage	Amperage	Power (P1/P2)	RPM	Pumping capacity	Pumping height
GTF 600-S1	230 V ~ 50 Hz	2.9 A	0.65 kW / 0.4 kW	2.750 min ⁻¹	12 m ³ /h	max. 8 m
GTF 1250-S1	230 V ~ 50 Hz	5.4 A	1.3 kW / 0.8 kW	2.700 min ⁻¹	20 m ³ /h	max. 11 m

Pumping capacity



Accessories

Aqualift F Basic and Aqualift S Basic

Upper section

		Art. no.
Upper section	Extension: From 140 - 440 mm, height adjustable Installation: up to max. 2 pieces can be installed one above the other	829 100



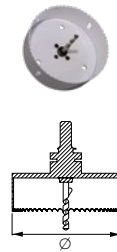
Alarm unit

		Art. no.
With optical probe	Funktion: High water / flood alarm system; for conductive / non-conductive liquids Cable length: 5 m (extendable up to 30 m)	20 223



Hole saw

		Outer pipe diameter in mm	Drill size in mm	Art. no.
Hole saw set	Inclusive: Saw blade holder	Ø 50	60	500 101
		Ø 75	92	
		Ø 110	121	
		Ø 110	121	500 100
		Ø 125	133	
		Ø 160	168	
		Ø 200 ¹⁾	200	500 102



¹⁾ use a power drill with at least 1000 watts

Sealing

		Outer pipe diameter in mm	Nominal pipe diameter in mm	Art. no.
Pipe sealing gasket	Drill size: Ø 50: 60 mm Ø 75: 92 mm Ø 110: 121 mm Ø 125: 133 mm Ø 160: 168 mm Ø 200: 210 mm	Ø 50	DN 50	850 114
		Ø 75	DN 70	850 116
		Ø 110	DN 100	850 117
		Ø 125	DN 125	850 118
		Ø 160	DN 150	850 119
		Ø 200	DN 200	850 123



Accessories

Aqualift F Basic

Closure valves

Compatibility see product description

Art. no.

Closure valve

Compatibility: Mono version

829 200



Closure valve

Compatibility: Duo version

829 250



This is KESSEL.

Since 1963, KESSEL has stood like no other company for innovative and reliable drainage technology. We have established ourselves as the impulse generator in the industry and are now a worldwide premium supplier.



Competent partner
since 1963



International player
60+
countries



Innovative premium supplier
3.000+
products



Safe employer
550+
employees



Sustainable company
110+ mio. €
in sales

During the production of our products as well as their operation on-site, we keep quality assurance, environmental protection and worker's safety at the top of our list.

We also place great value in the relationship with our customer, providing consultation, installation support, commissioning and after-sales service.

One thing is certain, our innovation, quality, reliability and service is number one in the industry.

KESSEL – Leading in drainage



Made in Germany





KESSEL Headquarters Lenting, Germany

Leading in drainage.

No matter whether the task involves discharging water, wastewater treatment or backwater protection: if the best solution is required, there is no option but KESSEL.

Backwater protection

Pump technology

Separator technology

Drainage technology



For further information
visit

www.kessel.com



For further information visit
www.kessel.com



Subject to technical modifications.

KESSEL AG

Bahnhofstraße 31 • 85101 Lenting, Germany

www.kessel.com