

MANHOLE COVERS



Manhole covers are available in various options and sizes. They are widely used in industrial and public facilities, i.e. in shops, exhibition halls, restaurants, workshops, warehouses, and other places where access to under-floor installations is required.

Floor tiles, terracotta or other materials can be used as finishing material of the upper part of a manhole covers.

Manhole covers are made of 3 [mm] thick stainless steel sheet of AISI 304 or AISI 316. This material allows applying products in places with strict hygienic requirements.

Manhole covers consist of upper and lower parts bolted to ensure safe closure. The product reinforcement is made of "black steel."

An O-ring seal between the lower and upper parts is applied.

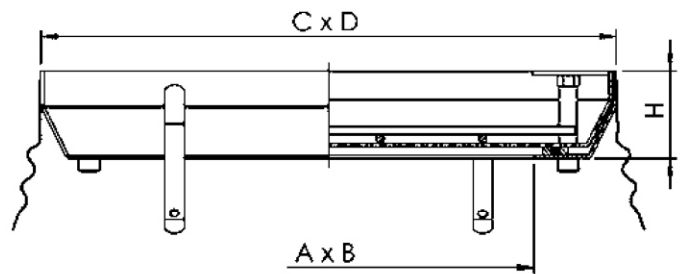
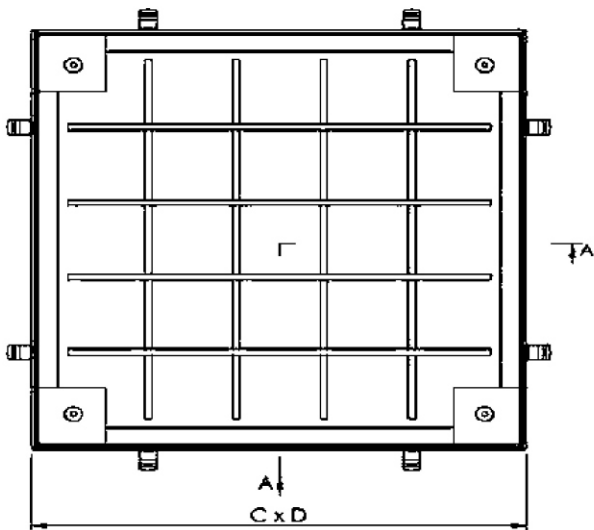
ADVANTAGES OF MANHOLE COVERS

- easy access to underfloor installations,
- isolation against odours,
- waterproof,
- simple opening system,
- high durability,
- aesthetically appealing.

MANHOLE COVERS



DIMENSIONS OF GAS-TIGHT MANHOLE COVERS



The set includes: 2x round handle

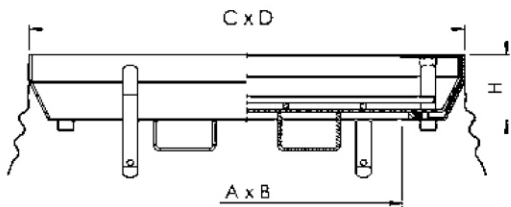


Option: checker plate

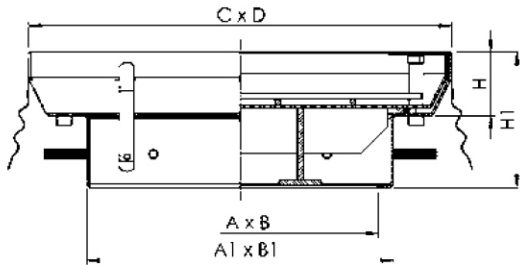


Class	Type	A x B [mm]	C x D [mm]	H [[mm]
B125	K3x3	300x300	440x440	70
	K4x4	400x400	560x560	85
	K5x5	500x500	660x660	85
	K6x6	600x600	760x760	85
	K7x7	700x700	880x880	100
	K8x8	800x800	980x980	100
	K9x9	900x900	1080x1080	100
	K10x10	1000x1000	1180x1180	100

MANHOLE COVERS



Class	Type	A x B [mm]	C x D [mm]	H [[mm]
C250	K3x3	300x300	440x440	70
	K4x4	400x400	560x560	85
	K5x5	500x500	660x660	85
	K6x6	600x600	760x760	85
	K7x7	700x700	880x880	100
	K8x8	800x800	980x980	100
	K9x9	900x900	1080x1080	100
	K10x10	1000x1000	1180x1180	100



Class	Type	A x B [mm]	A1 x B1 [mm]	C x D [mm]	H [[mm]	H1 [mm]
D400	K3x3	266x266	306x306	440x440	70	165
	K4x4	366x366	406x406	560x560	85	180
	K5x5	466x466	506x506	660x660	85	180
	K6x6	566x566	606x606	760x760	85	180
	K7x7	666x666	706x706	880x880	100	195
	K8x8	766x766	806x806	980x980	100	195
	K9x9	866x866	906x906	1080x1080	100	195
	K10x10	966x966	1006x1006	1180x1180	100	195

OPTION: GAS-TIGHT MODULAR MANHOLE COVER

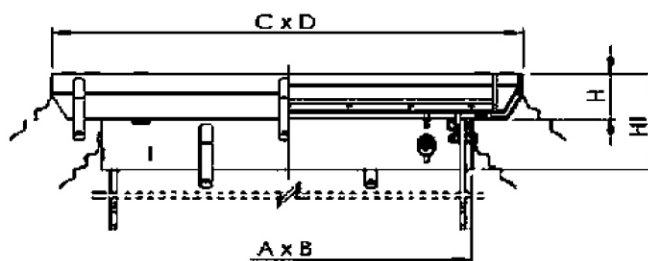
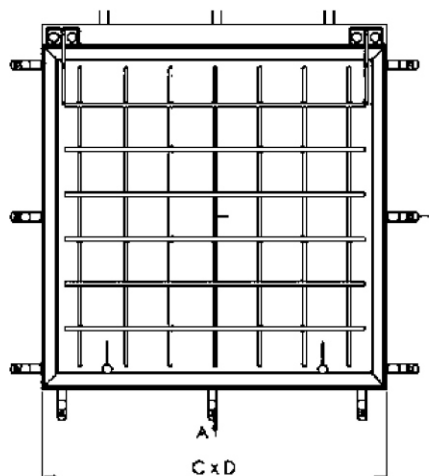


ATT offers design and production of bespoke gas-tight single and modular manhole covers.

MANHOLE COVERS OPTIONS



DIMENSIONS OF GAS-TIGHT MANHOLE COVERS WITH GAS LIFTERS



The set includes: 2 x handle



Option: checker plate



Class	Type	A x B [mm]	C x D [mm]	H [[mm]	H1 [mm]
B125	K6x6	600x600	770x770	100	200
	K7x7	700x700	870x870	100	200
	K8x8	800x800	970x970	100	200
	K9x9	900x900	1070x1070	100	200
	K10x10	1000x1000	1170x1170	100	200