

Range _____
Bathroom drains

 **KESSEL**



The final touch.

Bathroom drains
Wall drains
Shower channels



Stylish whatever
the design.



Wall drains

Clear edge. Exclusive design drains for barrier-free bathrooms.

[↗ Page 12](#)



Bathroom drains

Good point. Classic drains in numerous variations.

[↗ Page 18](#)



Shower channels

Beautiful line. Stylish drains with rim insert in timeless stainless steel design.

[↗ Page 28](#)

Style that works.

The fact that we are stylish is confirmed by numerous design prizes. That is nice. The fact that our products work outstandingly well is confirmed daily by our customers. That is important.

Which is why we give our all day in, day out, for your satisfaction. By only using the best materials. By offering accessories for a whole range of different requirements. And by relying consistently on the highest production standards.





High-quality materials. The delight at a newly designed bathroom should be more than short-term. Which is why we do not compromise as far as material selection is concerned. Whether classical stainless steel or innovative compound material is involved: with our high-quality materials we guarantee the maximum possible durability and safety for our bathroom drains.



Sensible accessories. Typical for KESSEL: like all our products, our bathroom drains are not only pretty to look at, they are extremely versatile too. In our comprehensive range of accessories you will find the right answer to all the challenges your application presents to our drains.



Global presence. Outstanding quality. KESSEL drainage solutions are coveted all over the world – more than 50 export markets speak for themselves. Our global success is thanks to the quality mark “Made in Germany” to a large extent: our bathroom drains are manufactured exclusively at our main production plant in Lenting near Ingolstadt.





Bathroom drain
The Ultraflat with
design cover



Shower channel *Linearis Infinity*
Length: 1,400 mm



Shower channel *Linearis Compact*
Length: 750 mm



Shower channel *Linearis Infinity*
Length: 1,600 mm



Bathroom drain *The Ultraflat* with design cover

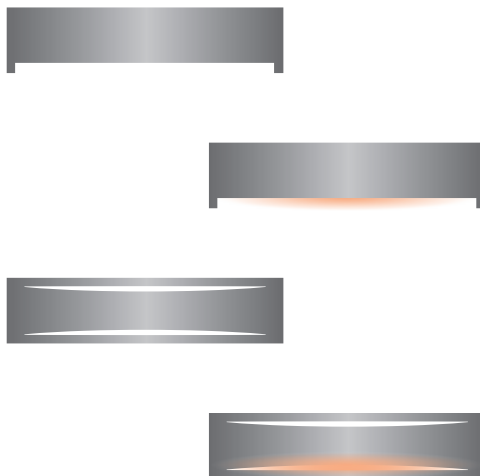


Wall drain *Scada*

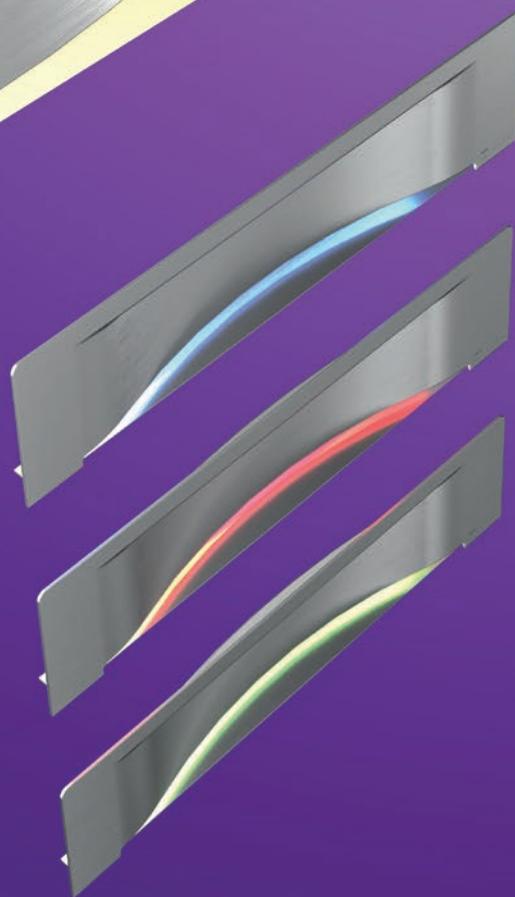
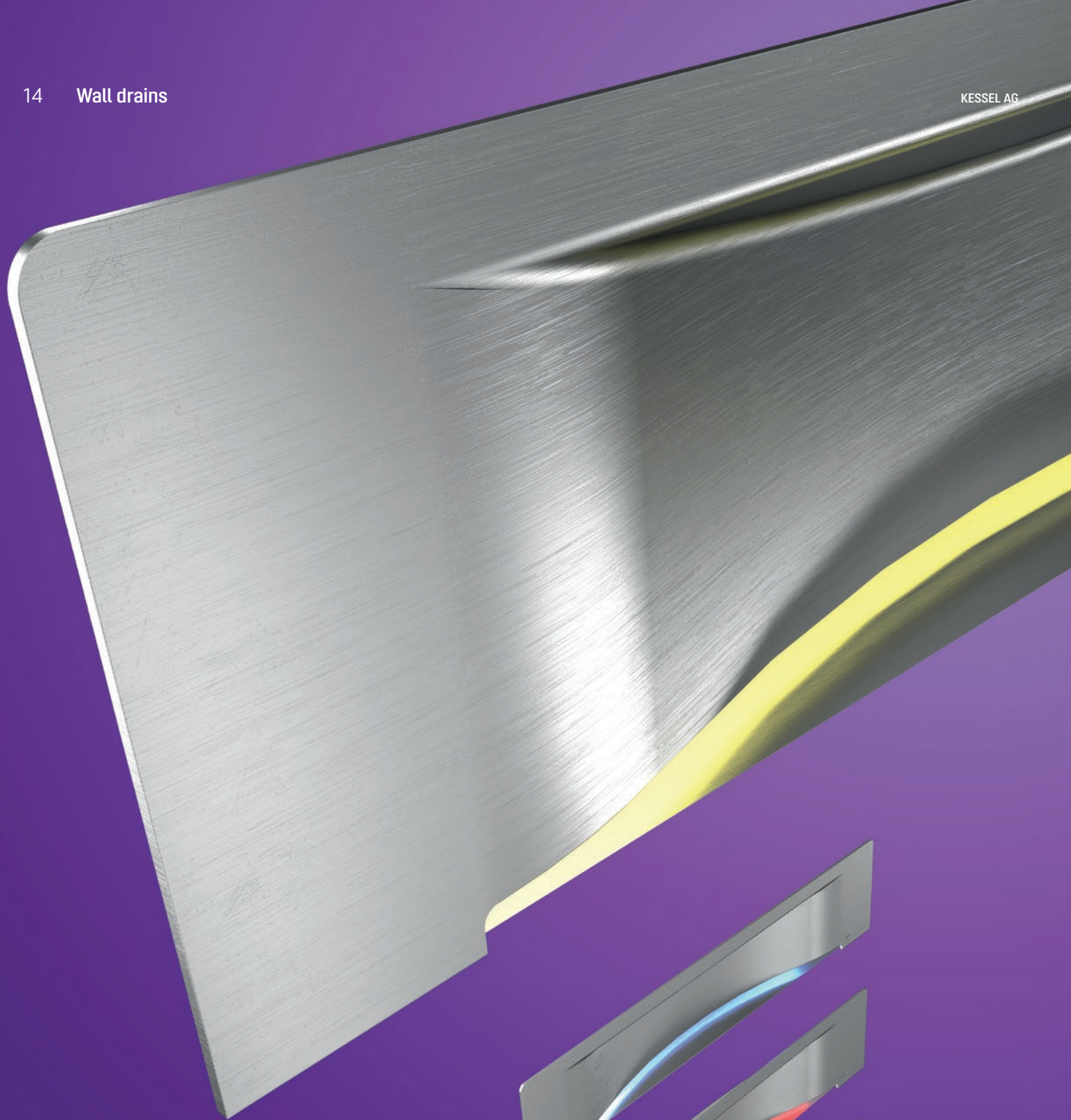
Clear edge.

Wall drains

Take a firm line: the design prize-winning wall drain *Scada* is a real “eye-catcher” that gives bathrooms a quite exclusive look. Rather than being in the floor, this compact drain is set into the wall, thus creating the pre-requisites for a 100 % floor-level and freely accessible shower. There is a choice of four high-grade drain covers available for *Scada* – even including versions with LED lighting!







Scada LED

Only from KESSEL: LED lighting with automatic colour-changing program or individual selection of light colour.

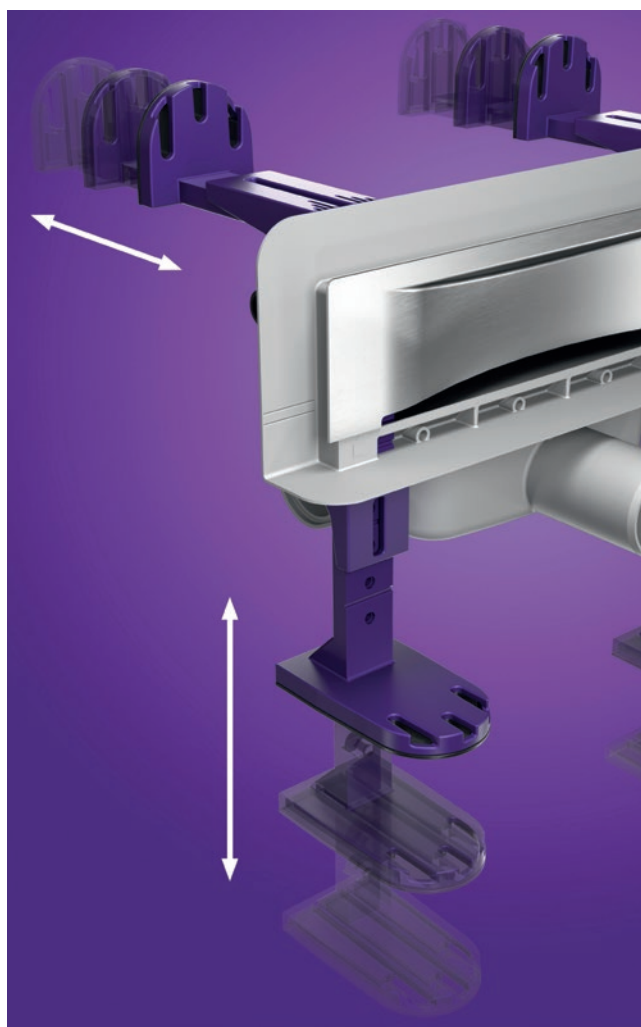
Clear advantage.

Features of our wall drains



Connections on three sides

Thanks to different connection options (front, lateral left or right) there is no room-side twisting of the drain pipe necessary and the installation of underfloor heating underneath the shower is no problem.



Height-adjustable installation supports

The height-adjustable installation supports of the dry-walling version allow convenient adjustment of the overall installation height from 80 to 215 mm up to the top edge of the tile.

Clear decision.

Wall drains range

Scada

The *Scada* is available with four different stainless steel drain covers. If necessary, the wall drain can also be pre-assembled and delivered sealed in an installation board. All versions offer a flow rate of 0.5 l/s.

Scada drain covers



Invisible
296 × 61 mm (W × H, tileable) for floor tiles up to 10 mm.



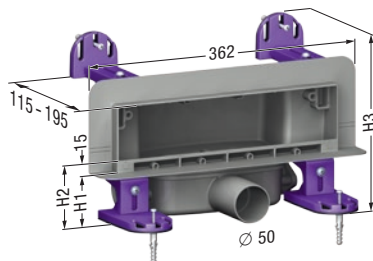
Stainless steel
312 × 74 mm (W × H) for floor tiles up to 17 mm.



Wave
312 × 74 mm (W × H) for floor tiles up to 10 mm.



Stainless steel
312 × 67 mm (W × H) for floor tiles up to 10 mm.



Scada with factory-mounted waterproofing membrane

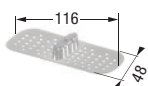
Drain cover	Art. no.
<i>Invisible</i>	48 000.01M
Stainless steel up to 10 mm	48 000.02M
<i>Wave</i>	48 000.03M
Stainless steel up to 17 mm	48 000.04M



Scada LED with factory-mounted waterproofing membrane

Drain cover	Art. no.
<i>Invisible</i>	48 003.41M
Stainless steel up to 10 mm	48 003.42M
<i>Wave</i>	48 003.43M
Stainless steel up to 17 mm	48 003.44M

Accessories



Hair filter

Made of polymer.

Art. no. 48 800



Multistop

Waterless rodent, foam and odour stop.

Art. no. 48 400



Dry-walling board

623 × 300 mm (W × H) for post-and-beam structure. With installation adhesive.

Art. no. 48 063

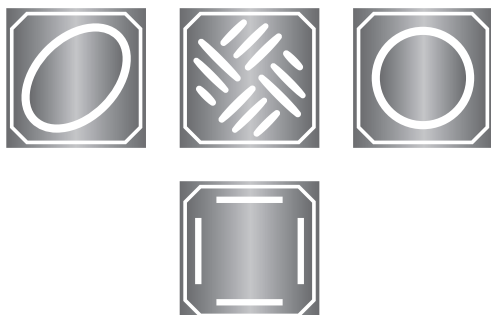
LED

LED lighting
with automatic colour-
changing program or individual
selection of light colour

Good point.

Bathroom drains

As far as classical drainage is concerned, our varied range of bathroom drains leaves nothing to be desired. No matter whether the bathroom project is in a new building, involves conversion or refurbishment work: the sophisticated functions and numerous combination options made possible by the modular principle make our bathroom drains suitable for almost all applications – and the different design covers made of stainless steel guarantee their stylish appearance.







Variable upper sections

Extremely flexible: our rotatable, tiltable and height-adjustable upper sections. The shallow bed upper section *Variofix* also permits the cover to be moved and thus adapted to the tile pattern.

Good thinking.

Features of our bathroom drains



Low installation depth

Our low-profile bathroom drains *The Superflat* and *The Ultraflat* are particularly suitable for renovation projects thanks to their low installation depths.



Convenient cleaning and maintenance

The locking and removal device *Lock & Lift* makes inserting and locking or unlocking and removing the cover ultra fast. This saves time during mandatory daily cleaning in the commercial sector.

Good choice.

Bathroom drains range

Covers

Choose from different design covers made of stainless steel and the tileable variant *Invisible* in order to design our bathroom drains to your own taste.

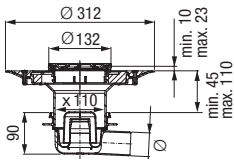


Oval Kessel Spot Slot Invisible

Classic

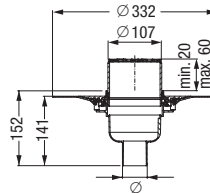
System 100

The *Classic* model is the all-rounder among our bathroom drains. Its compact size, lateral or vertical outlet and various installation options make it particularly versatile. The flow rate is 0.8 l/s.



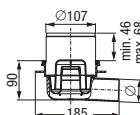
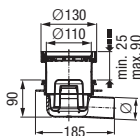
Classic with shallow bed upper section

Outlet	Cover, class	in mm	Art. no.
Ø 50			
lateral	Oval, L 15	120 × 120	40 150.54
lateral	Slotted, K 3	95 × 95	40 150.50
lateral	Slotted, K 3	138 × 138	40 150.51
vertical	Oval, L 15	120 × 120	40 250.54
vertical	Slotted, K 3	100 × 100	40 250.50
vertical	Slotted, K 3	150 × 150	40 250.51
Ø 75			
lateral	Oval, L 15	120 × 120	40 170.54
lateral	Slotted, K 3	95 × 95	40 170.50
lateral	Slotted, K 3	138 × 138	40 170.51
vertical	Oval, L 15	120 × 120	40 270.54
vertical	Slotted, K 3	95 × 95	40 270.50
vertical	Slotted, K 3	138 × 138	40 270.51



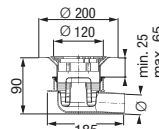
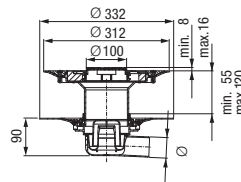
Classic with removable odour trap, with glued flange

Outlet	Cover, class	in mm	Art. no.
Ø 50			
lateral	Slotted, K 3	100 × 100	40 150.90
vertical	Slotted, K 3	100 × 100	40 250.90
Ø 75			
lateral	Slotted, K 3	100 × 100	40 170.90
vertical	Slotted, K 3	100 × 100	40 270.90



Classic
with removable odour trap

Outlet	Cover, class	in mm	Art. no.
Ø 50			
lateral	Invisible, K 3	110 × 110	40 150.66
lateral	Slotted, K 3	100 × 100	40 150.20
vertical	Invisible, K 3	110 × 110	40 250.66
vertical	Slotted, K 3	100 × 100	40 250.20
Ø 75			
lateral	Invisible, K 3	110 × 110	40 170.66
lateral	Slotted, K 3	100 × 100	40 170.20
vertical	Invisible, K 3	110 × 110	40 270.66
vertical	Slotted, K 3	100 × 100	40 270.20



Classic
with double waterproofing layer

Outlet	Cover, class	in mm	Art. no.
Ø 50			
lateral	Slotted, K 3	95 × 95	40 159.50
vertical	Slotted, K 3	95 × 95	40 259.50
Ø 75			
lateral	Slotted, K 3	95 × 95	40 179.50
vertical	Slotted, K 3	95 × 95	40 279.50

Classic
with clamped flange

Outlet	Cover, class	in mm	Art. no.
Ø 50			
lateral	Slotted, K 3	120 × 120	40 150.30
vertical	Slotted, K 3	120 × 120	40 250.30
Ø 75			
lateral	Slotted, K 3	120 × 120	40 170.30
vertical	Slotted, K 3	120 × 120	40 270.30

The Superflat

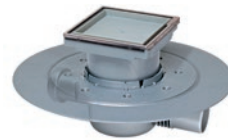
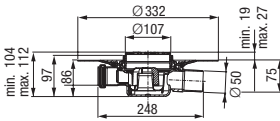
System 100

With its low overall height of 90 mm including cover, *The Superflat* is especially suitable for low installation depths. The upper section can be shortened according to requirements. The flow rate is 0.8 l/s, the outlet is lateral

The Superflat with removable odour trap, with glued flange

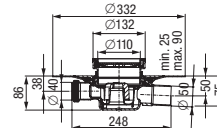


Outlet	Cover, class	in mm	Art. no.
Ø 50			
lateral	Slotted, K 3	100 × 100	42 701.91



The Superflat with removable odour trap, with glued flange

Outlet	Cover, class	in mm	Art. no.
Ø 50			
lateral	Invisible, K 3	110 × 110	42 701.95



Floordrain ME

System 100

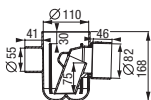
Modular design

Drain body Floordrain ME



With three inlets Ø 55 mm and one outlet Ø 75 mm, with removable odour trap. The flow rate is 1.8 l/s.

Art. no. 373 001



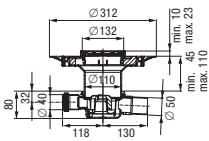
Upper sections



Cover	in mm	Lock & Lift	Art. no.
Class L 15			
Kessel	120 × 120	with	27 201
Kessel	120 × 120	without	27 225
Oval	120 × 120	with	27 202
Oval	120 × 120	without	27 226
Class K 3			
Spot	120 × 120	with	27 221
Spot	120 × 120	without	27 220
Slot	120 × 120	with	27 219
Slot	120 × 120	without	27 218



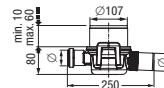
The Superflat
with removable odour trap,
with Variofix shallow bed
upper section



Outlet	Cover, class	in mm	Art. no.
Ø 50			
lateral	Oval, L 15	120 × 120	42 701.54
lateral	Slotted, K 3	95 × 95	42 701.50



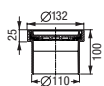
The Superflat
with removable odour trap



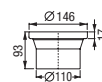
Outlet	Cover, class	in mm	Art. no.
Ø 50			
lateral	Slotted, K 3	100 × 100	42 701.20



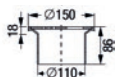
Cover, class	in mm	Features	Art. no.
Invisible, K 3	110 × 110	Rim stainless steel	27 211
Invisible, K 3	110 × 110	—	27 210



Cover, class	in mm	Features	Art. no.
Closed, L 15	150 × 150	Rim and cover stainless steel	27 1966



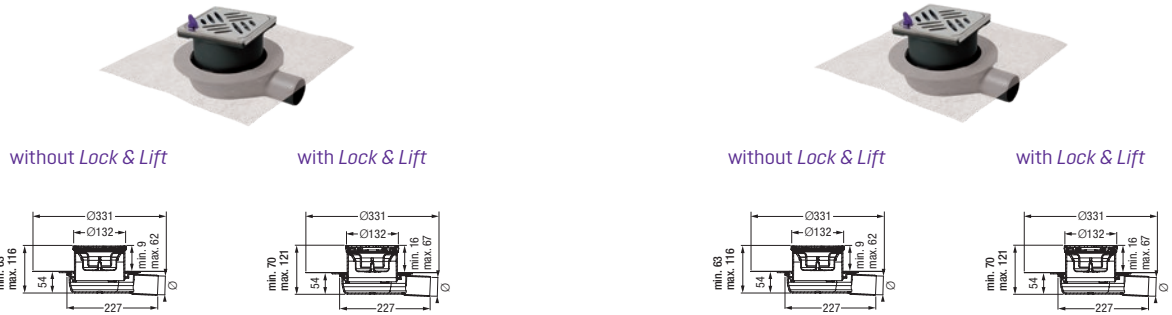
Cover, class	in mm	Features	Art. no.
Slotted, K 3	138 × 138	non-slip	27 176
Slotted, K 3	138 × 138	—	27 196



The Ultraflat

System 125

The name speaks for itself: the *The Ultraflat* is our flattest bathroom drain and thus perfect for renovation work in existing buildings. It offers a flow rate of 0.6 to 1.0 l/s.



The Ultraflat 54 with factory-mounted waterproofing membrane

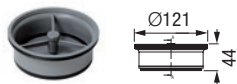
Cover, class	Features	Art. no.
Ø 40, lateral outlet, cover 120 × 120 mm		
Slotted, K 3	–	44 740.20M
Kessel, L 15	–	44 740.62M
Kessel, L 15	Lock & Lift	44 740.63M
Kessel, L 15	Lock & Lift	44 740.66M
Ø 50, lateral outlet, cover 120 × 120 mm		
Slotted, K 3	–	44 750.20M
Kessel, L 15	–	44 750.62M
Kessel, L 15	Lock & Lift	44 750.63M
Kessel, L 15	Lock & Lift	44 750.66M

The Ultraflat 54 with non-mounted waterproofing membrane

Cover, class	Features	Art. no.
Ø 40, lateral outlet, cover 120 × 120 mm		
Slotted, K 3	–	44 740.20
Kessel, L 15	–	44 740.62
Kessel, L 15	Lock & Lift	44 740.63
Ø 50, lateral outlet, cover 120 × 120 mm		
Slotted, K 3	–	44 750.20
Kessel, L 15	–	44 750.62
Kessel, L 15	Lock & Lift	44 750.63

Accessories

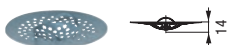
System 100 System 125



Megastop
Mechanical odour trap with water seal.



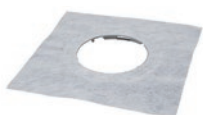
Multistop
Waterless rodent, foam and odour stop.



Hair filter
Made of polymer.



Installation aid
Installation aid set made of polymer for comfortable fixing and screwing.



Clip flange
Made of polymer. With factory-mounted waterproofing membrane.

Suitable for	System	Art. no.
<i>The Ultraflat</i>	125	48 550

Suitable for	System	Art. no.
<i>Classic, The Superflat</i>	100	43 500
<i>The Ultraflat</i>	125	48 500

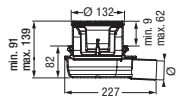
Suitable for	System	Art. no.
<i>Classic, The Superflat</i>	100	43 700
<i>The Ultraflat</i>	125	48 700

Suitable for	System	Art. no.
<i>The Ultraflat</i>	125	44 702

Suitable for	System	Art. no.
<i>The Ultraflat</i>	125	44 703

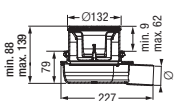


Art. no. 44 700.20M

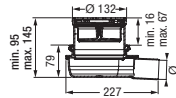


Art. no. 44 700.20

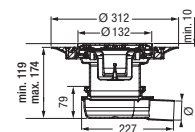
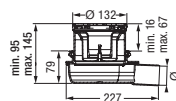
Art. no. 44 700.62



Art. no. 44 700.66



Art. no. 44 700.63



The Ultraflat 79 without waterproofing membrane

Cover, class	Features	Art. no.
Ø 50, lateral outlet, cover 120 × 120 mm		
Slotted, K 3	–	44 700.20
Kessel, L 15	–	44 700.62
Kessel, L 15	Lock & Lift	44 700.63
Kessel, L 15	Lock & Lift, Megastop	44 700.66

The Ultraflat 79 with Variofix shallow bed upper section and non-mounted waterproofing membrane

Cover, class	Features	Art. no.
Ø 50, lateral outlet, cover 120 × 120 mm		
Slotted, K 3	–	44 700.51
Kessel, L 15	–	44 700.52
Kessel, L 15	Lock & Lift	44 700.53

incl. clips flange with factory-mounted waterproofing membrane

Cover, class	Features	Art. no.
Ø 50, lateral outlet, cover 120 × 120 mm		
Slotted, K 3	–	44 700.20M



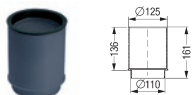
Conversion kit Push fit
Consists of 3 inlet adapters Ø 50 mm, 1 outlet adapter Ø 75 mm and 1 connection for upper section Ø 110 mm, EN1451-1.

Suitable for	System	Art. no.
Floordrain ME	100	373 008



Conversion kit Glue fit
Consists of 3 inlet adapters Ø 50 mm and 1 outlet adapter Ø 75 mm, EN 1451-1

Suitable for	System	Art. no.
Floordrain ME	100	373 007



Extension section
Made of polymer. With lip seal.

Suitable for	System	Art. no.
Classic, The Superflat	100	27 146



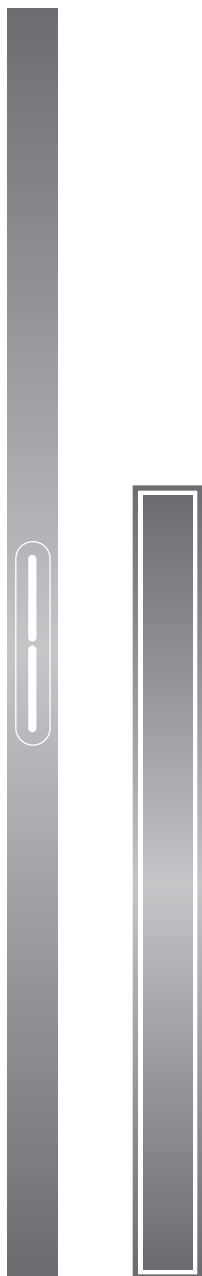
2 component adhesive
For gluing of KESSEL waterproofing membranes

Suitable for	System	Art. no.
The Ultraflat	125	48 650

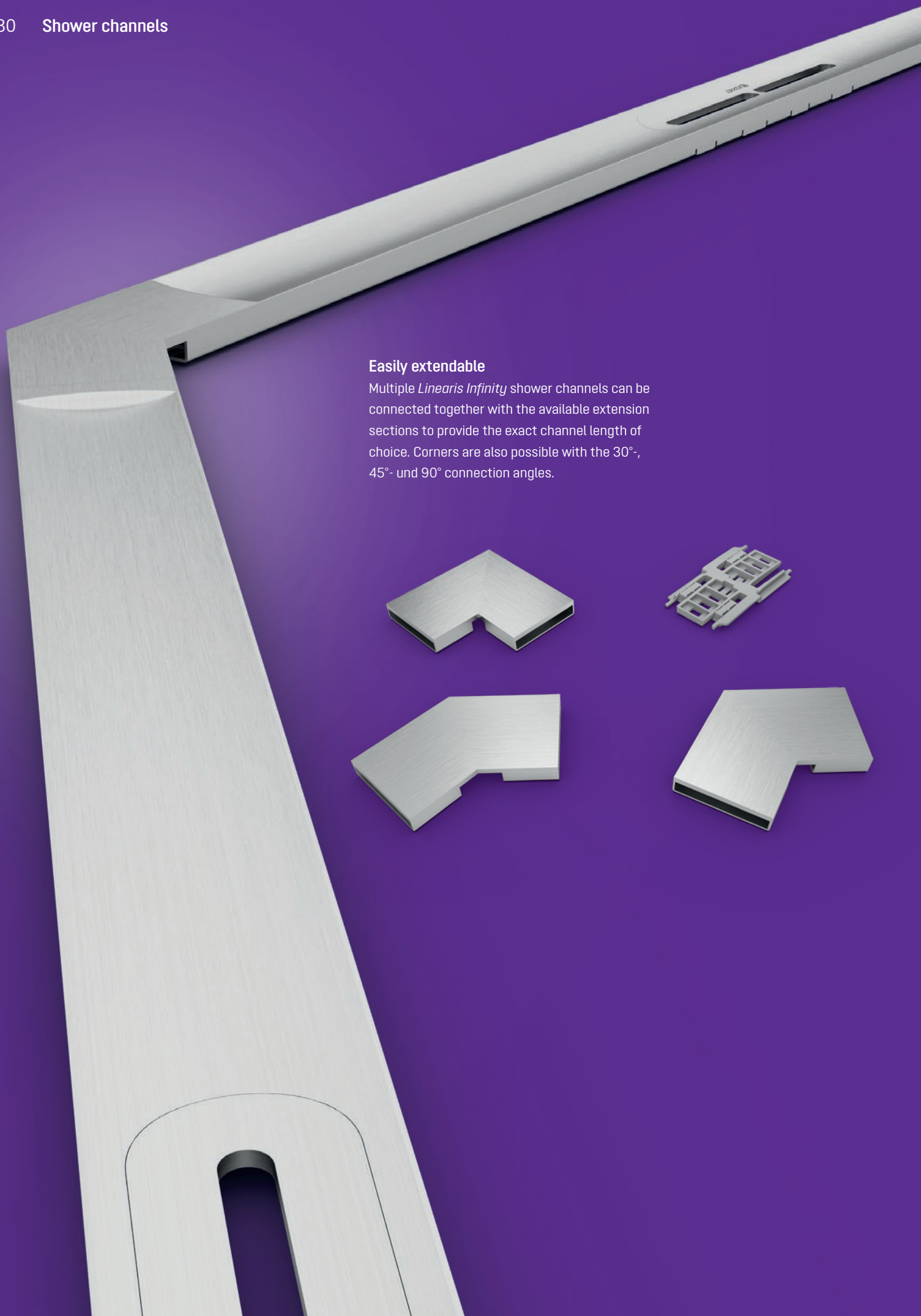
Beautiful line.

Shower channels

Good design is timeless – our shower channels *Linearis* are certainly no exception to this. Their reduced design and high-quality stainless steel make them an optical highlight that you will never tire of seeing. And even if you do, the shower channels can simply be redesigned for a new look thanks to their turnable and tileable stainless steel cover. No matter what: with *Linearis* roomside or near to the wall there are quite literally no limits to barrier-free shower convenience.

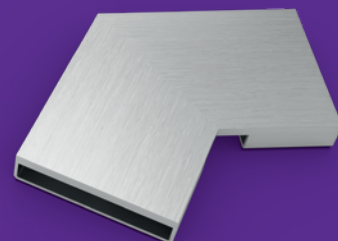
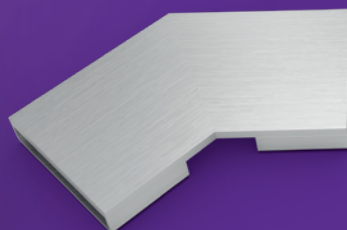
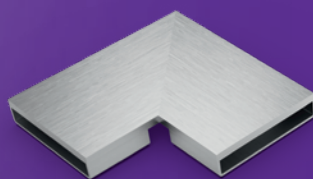






Easily extendable

Multiple *Linearis Infinity* shower channels can be connected together with the available extension sections to provide the exact channel length of choice. Corners are also possible with the 30°, 45°- und 90° connection angles.



Beautifully practical.

Features of our shower channels



Color selection

Linearis Infinity channels are available in the classic stainless steel matt as well as the new colored surfaces of matt Copper, Bronze or Black.

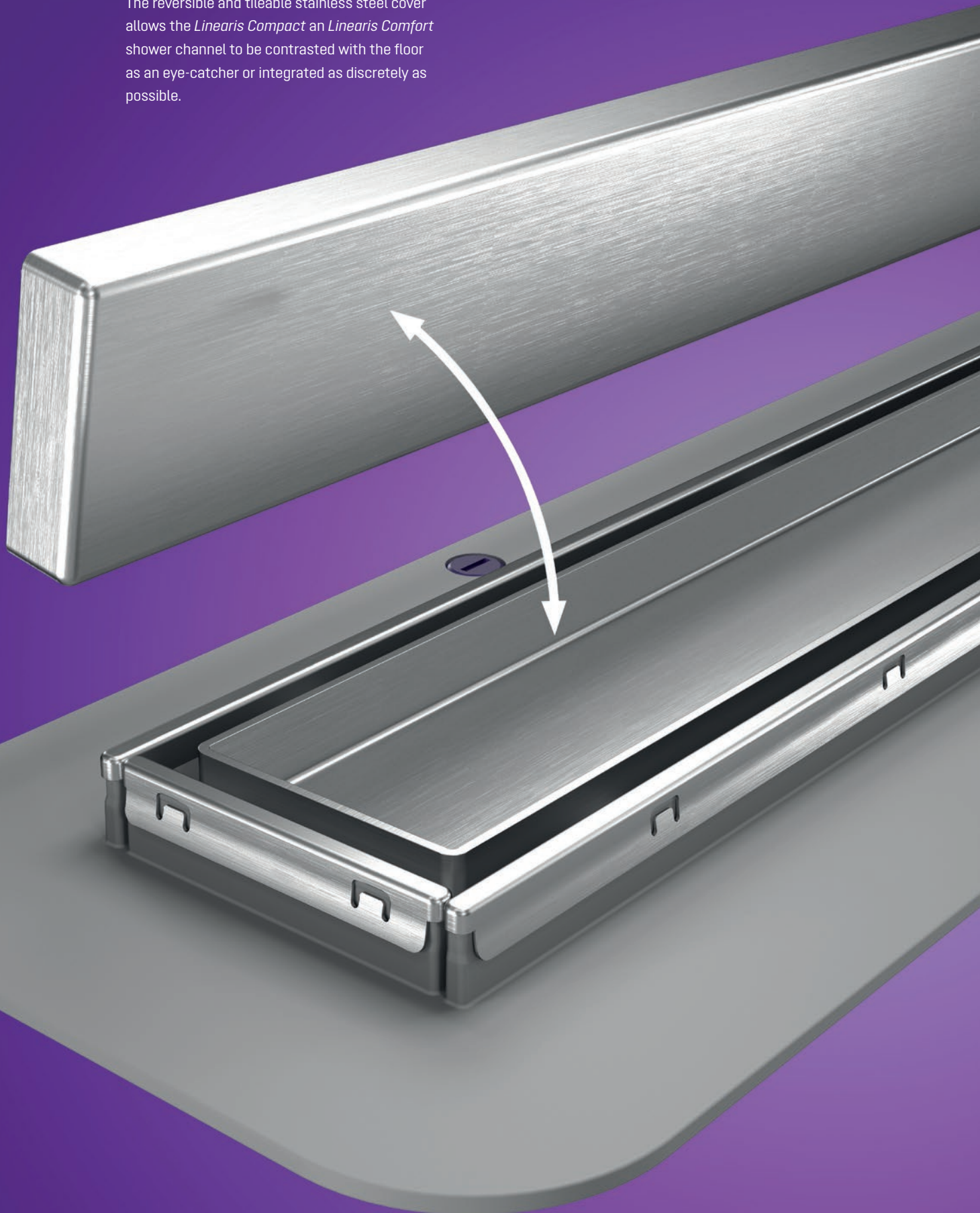


Hygienic concept

The new *Megastop* waterless odor trap offers a unique and hygienic solution to standard odor traps. Thanks to the easily removable channel covers which provide full access for cleaning and maintenance.

Individual design

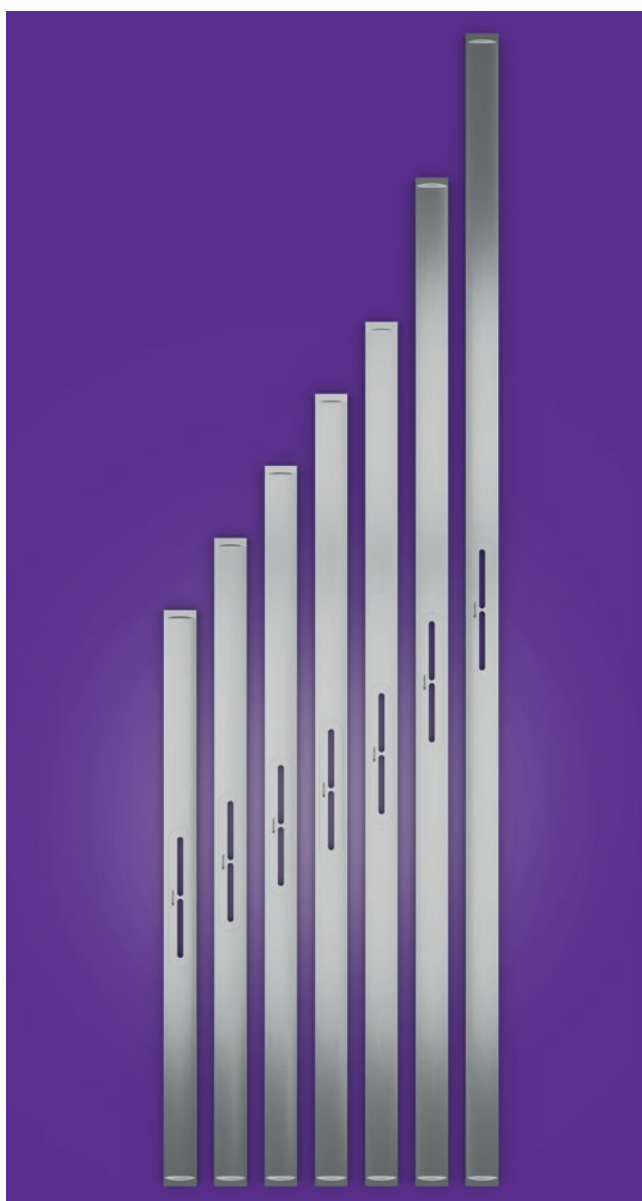
The reversible and tileable stainless steel cover allows the *Linearis Compact* an *Linearis Comfort* shower channel to be contrasted with the floor as an eye-catcher or integrated as discretely as possible.





various installation heights

The installation heights of the shower channels start at 60mm (*Linearis Infinity*) and can meet exact height requirements with the vertically adjustable installation supports.



Multiple channel lengths

All shower channels are available in multiple lengths. For custom installation lengths, the *Linearis Infinity* can be individually extended.

Linearis Infinity 60

The narrow *Linearis Infinity* channel for walk-in showers is suitable for indoor linear drainage for household and commercial use. The channel profile made of AISI 316 stainless steel can be individually extended straight or at three (30, 45 and 90 degree) angles.

The drain body made of PP is equipped with sound and settlement absorbers. The channel contains a clip-on flange with factory-mounted waterproofing membrane according to EN 1253-1 and DIN 18534-1-W3-I. The channel profile can be pushed in the lengthwise and transverse direction in the clip-on flange to level out construction tolerance. Open seepage water openings, without flooding of the waterproofing level in the event of backwater.

Including *Megastop* mechanical odour trap with water seal.

Version:

- Type of waterproofing layer: factory-mounted waterproofing membrane
- Seepage opening: open
- Water exposure class in accordance to DIN 18534-1 (up to and including): W3-I
- Nominal size (Ø): 40 mm

Drain body:

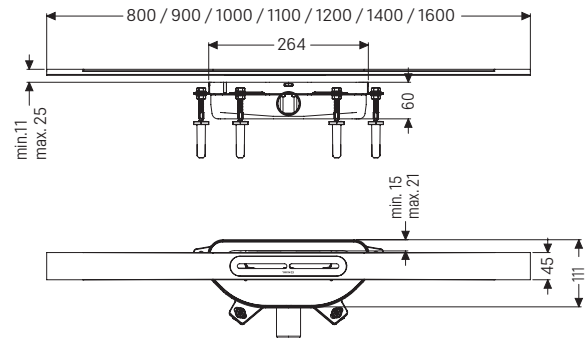
- Length: 264 mm
- Width: 111 mm
- Min. design height: 60 mm
- Outlet size (Ø): 40 mm OD, lateral
- Material of drain body: PP

Cover features:

- Cover material: AISI 316 stainless steel
- Min. flooring height: 11 mm
- Max. flooring height: 25 mm
- Load class: K 3 (EN 1253-1)
- Width: 45 mm
- Choose - length, color, odour trap

Discharge rate (l/s) with Megastop:

- with 10 mm threshold: 0.2 l/s, with 20 mm threshold: 0.4 l/s



Odour trap *Megastop*

Channel length in mm	Art. no.
Surface: Stainless steel, brushed	
800	45 300.08
900	45 300.09
1,000	45 300.10
1,100	45 300.11
1,200	45 300.12
Surface: Stainless steel, black, brushed	
800	45 302.08
900	45 302.09
1,000	45 302.10
1,100	45 302.11
1,200	45 302.12
Surface: Stainless steel, copper, brushed	
800	45 303.08
900	45 303.09
1,000	45 303.10
1,100	45 303.11
1,200	45 303.12
Surface: Stainless steel, bronze, brushed	
800	45 304.08
900	45 304.09
1,000	45 304.10
1,100	45 304.11
1,200	45 304.12

Linearis Infinity 90

The narrow *Linearis Infinity* channel for walk-in showers is suitable for indoor linear drainage for household and commercial use. The channel profile made of AISI 316 stainless steel can be individually extended straight or at three (30, 45 and 90 degree) angles.

The drain body made of PP is equipped with sound and settlement absorbers. The channel contains a clip-on flange with factory-mounted waterproofing membrane according to EN 1253-1 and DIN 18534-1-W3-I. The channel profile can be pushed in the lengthwise and transverse direction in the clip-on flange to level out construction tolerance. Open seepage water openings, without flooding of the waterproofing level in the event of backwater.

With Odour trap with sealing water height of 50 mm.

Version:

- Type of waterproofing layer: factory-mounted waterproofing membrane
- Seepage opening: open
- Water exposure class in accordance to DIN 18534-1 (up to and including): W3-I
- Sealing water height: 50 mm
- Nominal size (Ø): 50 mm

Drain body:

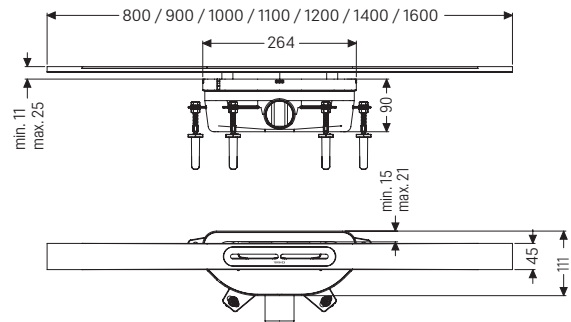
- Length: 264 mm
- Width: 111 mm
- Min. design height: 90 mm
- Outlet size (Ø): 50 mm OD, lateral
- Material of drain body: PP

Cover features:

- Cover material: AISI 316 stainless steel
- Min. flooring height: 11 mm
- Max. flooring height: 25 mm
- Load class: K 3 (EN 1253-1)
- Width: 45 mm
- Choose - length, color, odour trap

Discharge rate (l/s):

- with 10 mm threshold: 0.6 l/s, with 20 mm threshold: 0.8 l/s



Odour trap with 50 mm water seal

Channel length in mm	Art. no.
Surface: Stainless steel, brushed	
800	45 200.08
900	45 200.09
1,000	45 200.10
1,100	45 200.11
1,200	45 200.12
Surface: Stainless steel, black, brushed	
800	45 202.08
900	45 202.09
1,000	45 202.10
1,100	45 202.11
1,200	45 202.12
Surface: Stainless steel, copper, brushed	
800	45 203.08
900	45 203.09
1,000	45 203.10
1,100	45 203.11
1,200	45 203.12
Surface: Stainless steel, bronze, brushed	
800	45 204.08
900	45 204.09
1,000	45 204.10
1,100	45 204.11
1,200	45 204.12

Accessories



Megastop
Odour, foam and
pest barrier including hair filter

Art. no. 45 100



Hair filter
made from polymer

Art. no. 45 102

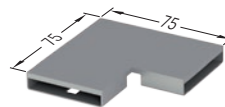
Connecting pieces



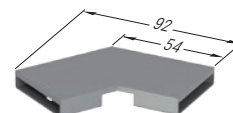
Straight connector
for straight connection of two channels

Art. no. 45 103

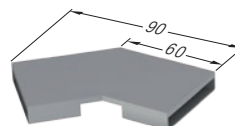
Angle connectors
with two connectors, article 45 103, for
axially restrained extension



90°	Art. no.
Stainless steel, brushed	45 100.01
Stainless steel, black, brushed	45 102.01
Stainless steel, copper, brushed	45 103.01
Stainless steel, bronze, brushed	45 104.01



45°	Art. no.
Stainless steel, brushed	45 100.02
Stainless steel, black, brushed	45 102.02
Stainless steel, copper, brushed	45 103.02
Stainless steel, bronze, brushed	45 104.02

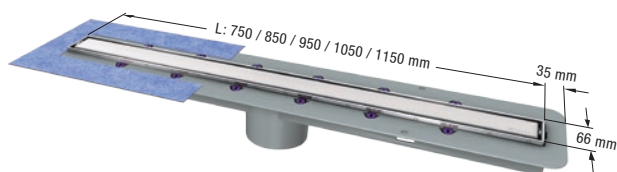


30°	Art. no.
Stainless steel, brushed	45 100.03
Stainless steel, black, brushed	45 102.03
Stainless steel, copper, brushed	45 103.03
Stainless steel, bronze, brushed	45 104.03

System 125

Linearis Comfort

The elegant solution: the *Linearis Comfort* with factory-mounted waterproofing membrane is our premium shower channel for maximum showering convenience. It provides a barrier-free experience, best sound-proofing features and a flow rate of 1.1 l/s / 1.0 l/s with 10 mm / 0 mm water head.



Upper section Linearis Comfort

Length (mm)	Art. no.
750	48 928M
850	48 929M
950	48 930M
1,050	48 931M
1,150	48 932M

Accessories



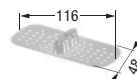
Drain body
The Ultraflat 79
lateral outlet Ø 50,
without odour trap

Inlet	Art. no.
without inlet	44 700
with inlet	44 701



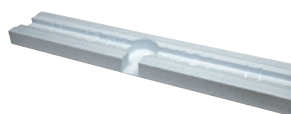
Multistop
Waterless rodent, foam and odour stop.

Art. no. 48 400



Hair filter
Made of polymer.

Art. no. 48 800



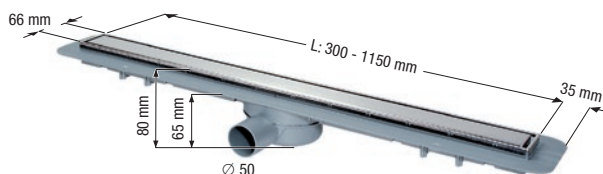
Installation aid
Installation aid can be shortened individually as screed substitute. With installation adhesive.

Product	Art. no.
<i>Linearis Comfort</i>	48 640
<i>Linearis Compact</i>	48 639

System 100

Linearis Compact

Our shower channel *Linearis Compact* with non-mounted waterproofing membrane is a dream for all those who value puristic, timeless design in the bathroom. Its compact height also makes it suitable for renovation work and a flow rate of 0.6 l/s / 0.5 l/s with 10 mm / 0 mm water head.



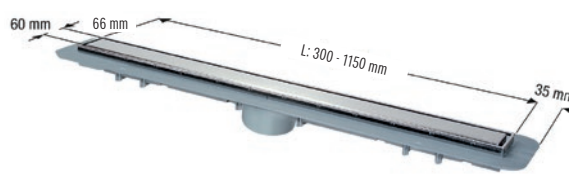
Linearis Compact with factory-mounted waterproofing membrane

Length (mm)	Art. no.
300	45 600.59M
450	45 600.60M
550	45 600.61M
650	45 600.62M
750	45 600.63M
850	45 600.64M
950	45 600.65M
1,050	45 600.66M
1,150	45 600.67M

Linearis Compact

Modular design

The *Linearis Compact* with non-mounted waterproofing membrane can also be delivered as an upper section that can be combined with all drain bodies and accessory parts of the modular system 100.



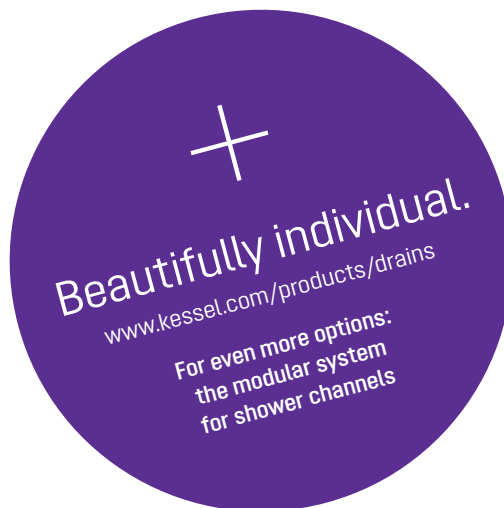
Upper section Linearis Compact

Length (mm)	Art. no.
300	47 804S
450	47 805S
550	47 806S
650	47 807S
750	47 808S
850	47 809S
950	47 810S
1,050	47 811S
1,150	47 812S



Drain body Classic Ø 50, without odour trap

Outlet	Art. no.
Ø 50	
lateral	40 151
vertical	40 251
Ø 75	
lateral	40 171
vertical	40 271



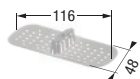
Accessories



Multistop

Waterless rodent, foam and odour stop.

Art. no. 48 400



Hair filter

Made of polymer.

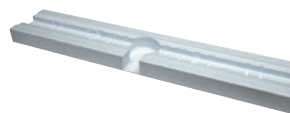
Art. no. 48 800



2 component adhesive

For gluing of KESSEL waterproofing membranes

Art. no. 48 650

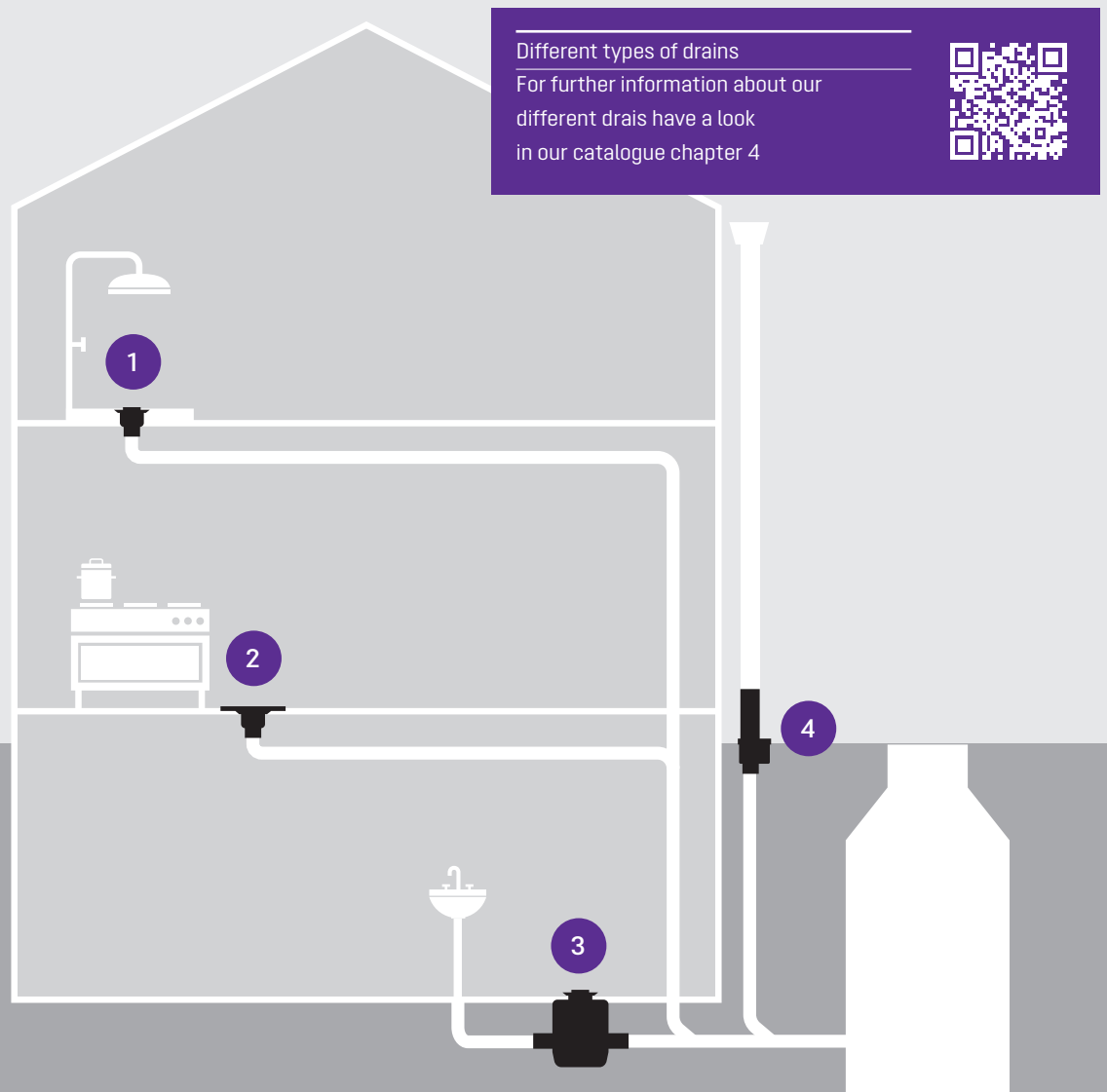


Installation aid

Installation aid can be shortened individually as screed substitute. With installation adhesive.

Product	Art. no.
Linearis Comfort	48 640
Linearis Compact	48 639

KESSEL offers a big range of different types of drains



1 Bathroom drains
Bathroom drainage tailored to requirements

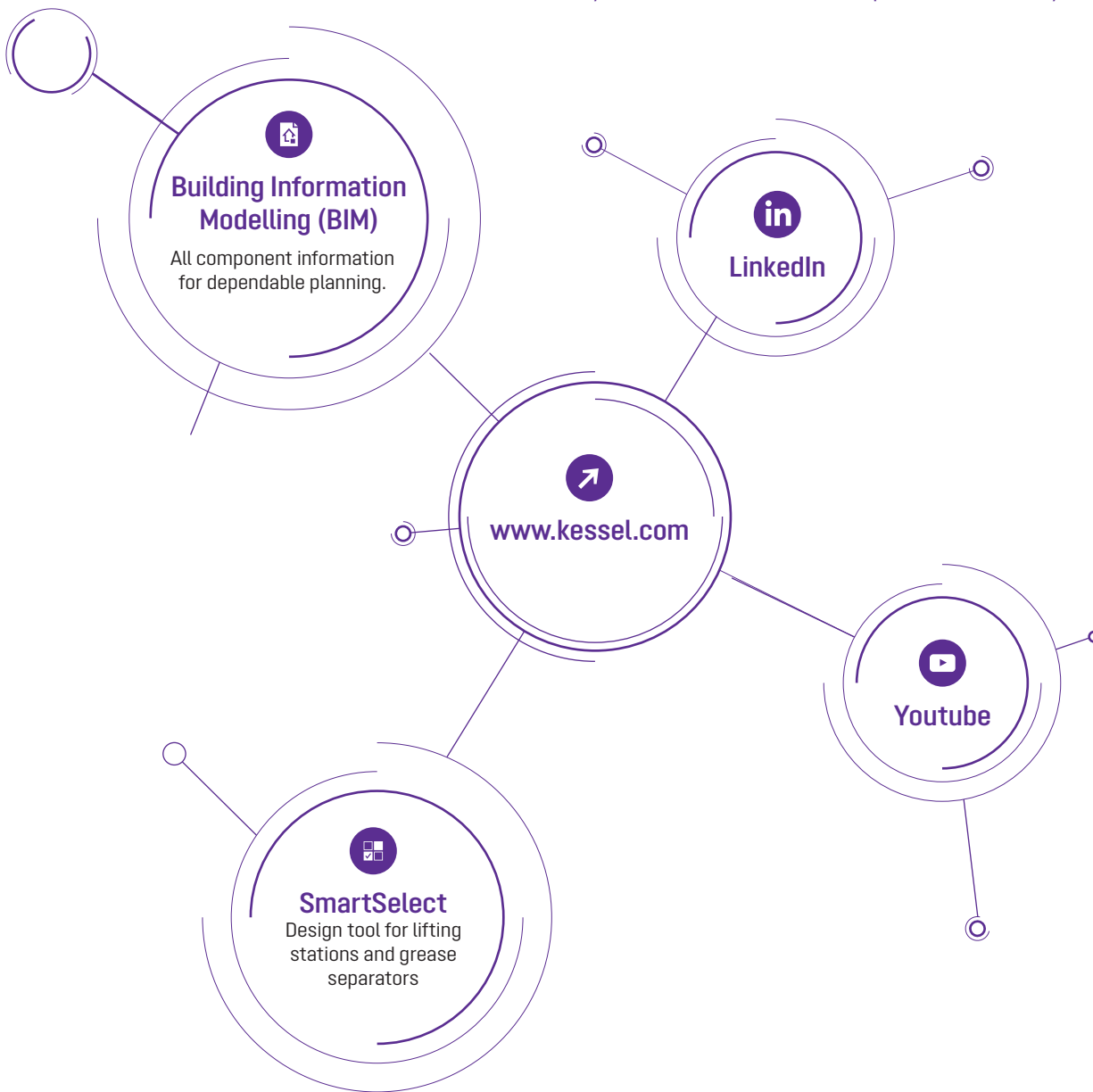
2 Floor drains
Floor drains with versatile properties

3 Basement drains
For dry floors in basement rooms

4 Outdoor drains
Robust solutions for particular loads

Our digital services offer

With KESSEL SmartServices the future has already arrived for each of our drainage products. For you as a customer, this not only means extensive digital support for design, installation and operation – but also the certainty that we continue to develop our services for your benefit.



Stay up to date:
get always the newest information
about KESSEL and our products



BIM



Facebook



LinkedIn



SmartSelect



Youtube

This is KESSEL.

Since 1963, KESSEL has stood like no other company for innovative and reliable drainage technology. We have established ourselves as the impulse generator in the industry and are now a worldwide premium supplier.



Competent partner
since 1963



International player
60+
countries



Innovative premium supplier
3.000+
products



Safe employer
765
employees



Sustainable company
141,5 mio. €
in sales

During the production of our products as well as their operation on-site, we keep quality assurance, environmental protection and worker's safety at the top of our list.

We also place great value in the relationship with our customer, providing consultation, installation support, commissioning and after-sales service.

One thing is certain, our innovation, quality, reliability and service is number one in the industry.

KESSEL – Leading in drainage



Made in Germany



For further information
visit

www.kessel.com



KESSEL Headquarters Lenting, Germany

Leading in drainage.

No matter whether the task involves discharging water, wastewater treatment or backwater protection: if the best solution is required, there is no option but KESSEL.



Backwater protection

Backwater valves
Backwater chambers



Pump technology

Backwater pumping station
Hybrid lifting station
Lifting stations
Pumping stations
Submersible pumps,
conversions and control units



Drains & channels

Bathroom drains
Floor drains
Basement drains
Outdoor drains



Separators

Grease separators
Coalescence / Oil /
Fuel separators
Sediment separators
Starch separators



Subject to technical modifications.

KESSEL AG

Bahnhofstraße 31 • 85101 Lenting • Germany

www.kessel.com