

The new lifting station for restricted use

Mini format. Mega strong.

The *Minilift S* for wastewater
without sewage makes
everything possible.



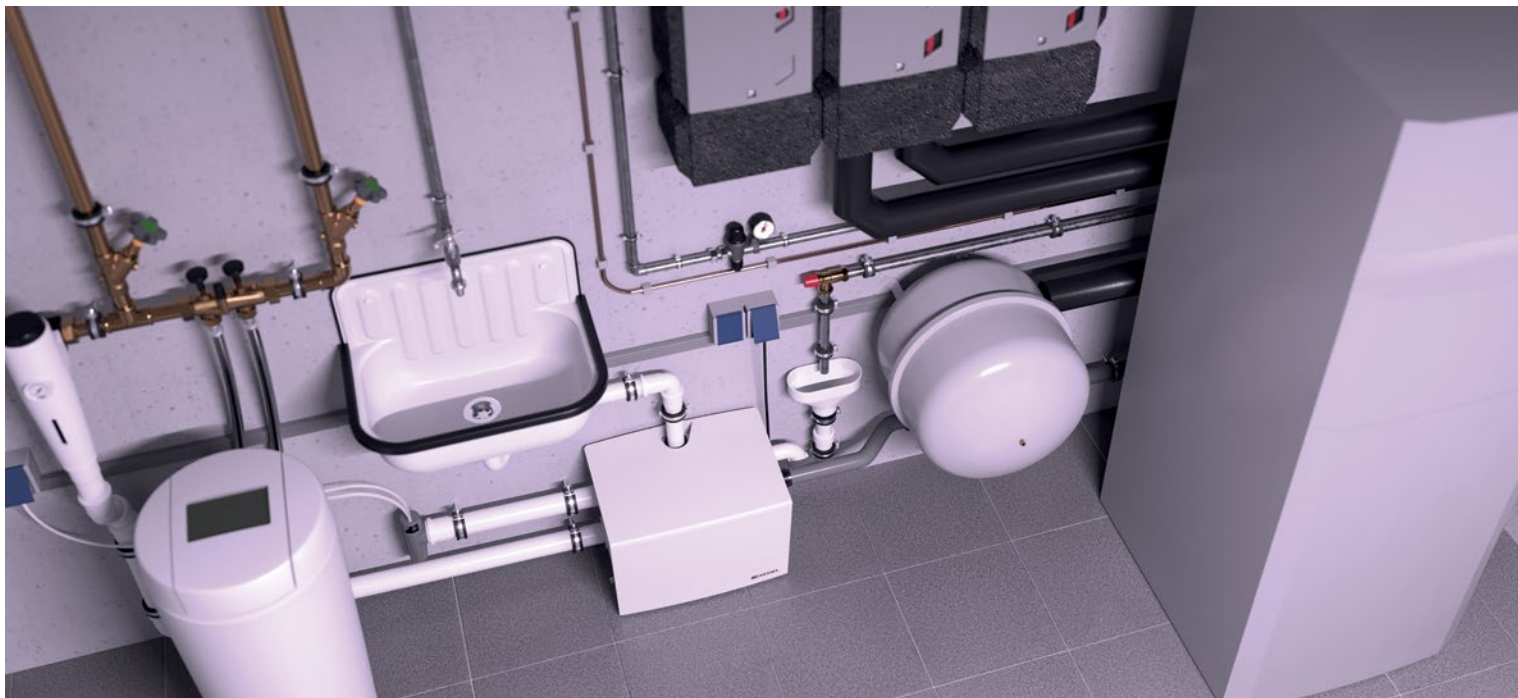
Areas of application

Mega talented

But it's got the lot: The *Minilift S* fits in anywhere due to its small size and impresses with its performance in many areas. The variable inlet and connection options make it a space-saving all-rounder for sewage free wastewater. Where can it play out its strengths? For example, in the following situations:



A clean matter: The *Minilift S* is a practical solution for washing machines and wash basin in laundry rooms.



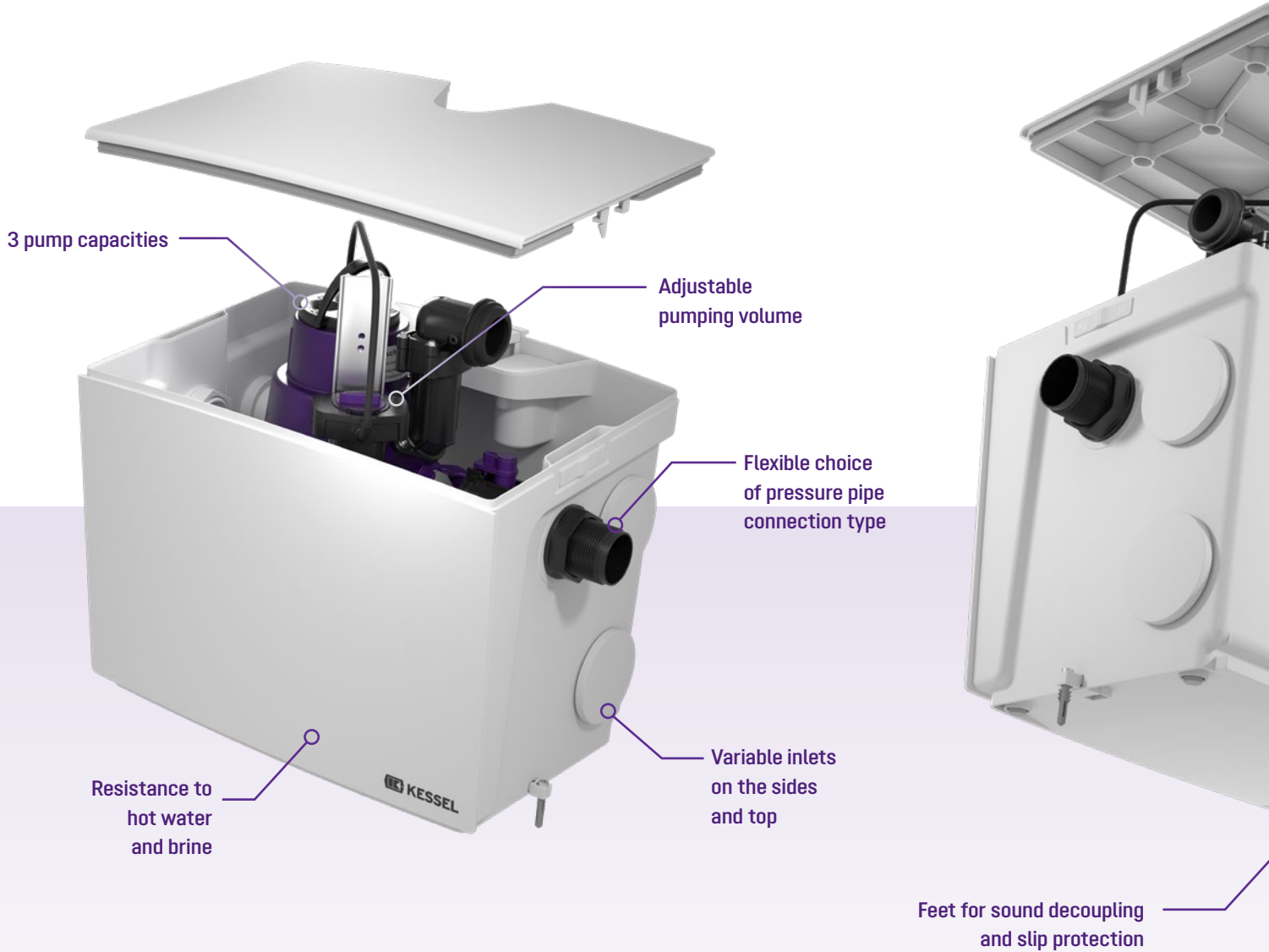
The *Minilift S* plays out its functional strengths in utility rooms. A water softener, backwash filter or heating system can be connected without any problems.



The *Minilift S* is ideal for renovations in small bathrooms next to a hobby room or in a workshop.



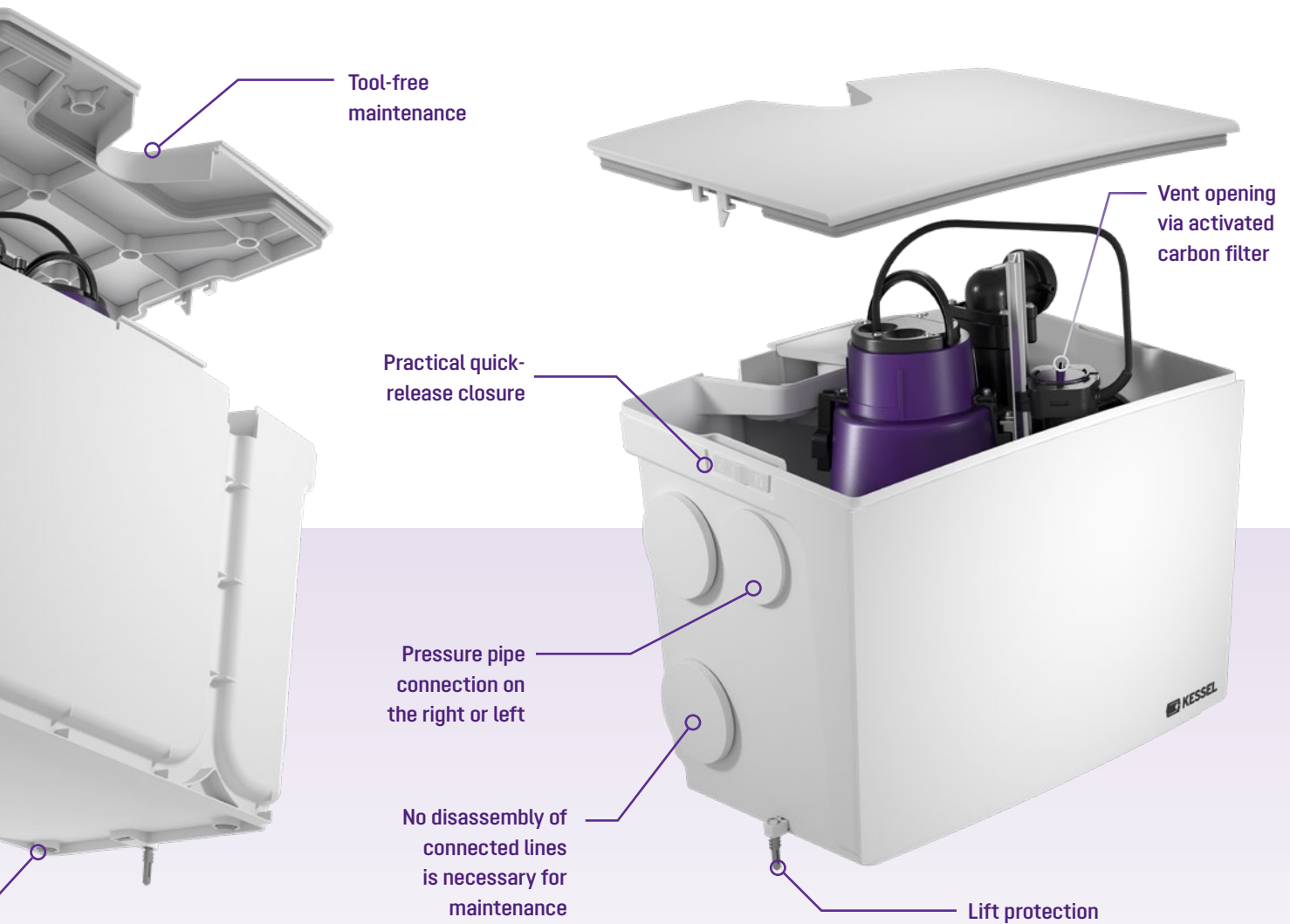
A talented solution for the office:
The *Minilift S* can easily find a place in small office kitchens.



360° possibilities with the *Minilift S*

Mega versatile

Small in size but great possibilities: The plug-in ready *Minilift S* lifting station for restricted use is suitable for the disposal of wastewater from individual drainage objects, such as a wash basin, dishwasher or shower. On the following pages you will learn more about what makes this space-saving all-rounder stand out.



Learn more about the *Minilift S*:

Product advantages
➤ Page 6

Products
➤ Page 10

Pumps
➤ Page 11



Discover online
www.minilift-s.com

Adjustable pumping volume

Mega efficient

The height-adjustable float switch of the *Minilift S* can be fixed in two different positions. In this way, the pumping volume can be adapted to the amount of wastewater generated. The advantage: You can therefore influence the filling level from which the lifting station for restricted use starts to pump.



Inlets & connections

Mega free

A washbasin, dishwasher or shower: Despite its small size, the *Minilift S* can handle the lot. There are five inlet connection options available, located on the sides and on the top. The pressure pipe can be installed either on the right or left side.



Resistance to hot water and brine

Mega resistant

Do you want to connect a washing machine to the lifting station for restricted use? Or is there a water softener in the house? No problem. The *Minilift S* can also be equipped with pumps that are resistant to both hot water and brine.





Installation

Mega easy

Installing the *Minilift S* is both easy and convenient. The plug-in ready delivery of the pump and pre-assembled elements save time and therefore costs during installation.

Advantages

- + Plug-in ready pump
- + Quick and easy assembly of all components without tools and drill holes
- + Cover with fixed seal
- + Backflow preventer on the pressure side is integrated at the factory

Maintenance

Mega relaxed

Purchasing and installation are one thing, maintenance and operation are another. Thanks to sophisticated locking devices and clever mechanisms, it is really easy to keep the *Minilift S* in top condition.

Advantages

- + Lock for opening the cover without tools
- + One-handed closure for pump and backflow preventer
- + Easy access to the tank without having to disassemble components or pipes
- + Easy cleaning of all components is possible



Minilift S lifting station for free-standing installation



The plug-in ready *Minilift S* lifting station for restricted use is suitable for the disposal of domestic sewage free wastewater and ideal for connecting a shower, bathtub, washbasin, sink, dishwasher or washing machine.

Type of wastewater: sewage free
Installation situation: free-standing

Version:
Type of system: single station
Pump control: float switch
Backflow preventer: integrated

Resistant:

- Resistant to saline media,
- Wastewater from softening units and
- Wastewater containing condensate from heating systems

Pressure pipe connection options:
1 1/2" thread, PVC adhesive connection, click adapter

Ventilation: activated carbon filter
Cable length: 5 m

Condition as supplied: plug-in ready

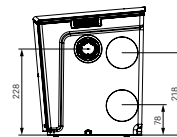
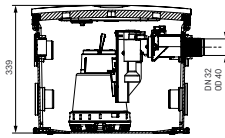
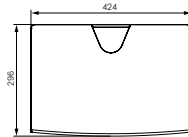
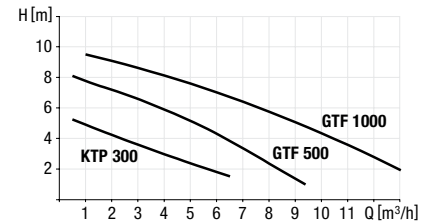


Fig.: Article 28561

Pump	Voltage	Art. no.
Submersible pump KTP 300		
KTP 300	230 V	28 561
KTP 300 resistant	230 V	28 561C
Submersible pump GTF 500		
GTF 500	230 V	28 562
GTF 500 resistant	230 V	28 562C
Submersible pump GTF 1000		
GTF 1000	230 V	28 563
GTF 1000 resistant	230 V	28 563C



Pump types

Pump	Power P1/P2	Power supply	Current	RPM	Plug	Cable length	Pumping height	Pumping capacity
KTP 300	0.34 kW / 0.21 kW	230 V ~ 50 Hz	1.6 A	2800	Schuko earthed safety plug	5 m	6 m	max. 8 m³/h
KTP 300 Resistant	0.34 kW / 0.21 kW	230 V ~ 50 Hz	1.6 A	2800	Schuko earthed safety plug	5 m	6 m	max. 8 m³/h
GTF 500	0.6 kW / 0.36 kW	230 V ~ 50 Hz	1.6 A	2800	Schuko earthed safety plug	5 m	8 m	max. 10 m³/h
GTF 500 Resistant	0.6 kW / 0.36 kW	230 V ~ 50 Hz	1.6 A	2800	Schuko earthed safety plug	5 m	8 m	max. 10 m³/h
GTF 1000	1.27 kW / 0.73 kW	230 V ~ 50 Hz	1.6 A	2800	Schuko earthed safety plug	5 m	10 m	max. 14.5 m³/h
GTF 1000 Resistant	1.27 kW / 0.73 kW	230 V ~ 50 Hz	1.6 A	2800	Schuko earthed safety plug	5 m	10 m	max. 14.5 m³/h



CE DIN EN 12050-2

Always the right choice:
kessel.com/smartselect

Accessories

Alarm unit with optical probe



Function:
for monitoring and reporting of flooding;
for conductive / non-conductive liquids
Cable length: 5 m (extendable up to 30 m)

Art. no.
20 223

Plug-in backflow preventer, for DN 50 inlet



Prevents possible backflow in the inlet pipe.
Nominal size (DN): 50 / diameter: 55 mm
Length: 50 mm / height: 68 mm
Material: PP

Art. no.
28 093

Overview of pump capacities

Mega strong

A choice of three different pump capacities is available depending on how much power is required. These are also available in versions that are resistant to hot water and brine. This means that the *Minilift S* can be configured exactly in such a way that it perfectly meets the requirements placed on it by its application.



KTP 300

for sewage free wastewater
Art. no. 28 561

KTP 300 resistant

Resistant to:

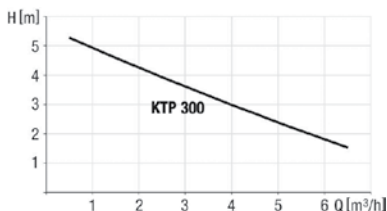
- Saline media
- Wastewater from softening units
- Wastewater containing condensate from heating systems

Art. no. 28 561C

Version:

Max. flow rate.: 8 m³/h
Max. pumping height.: 6 m
Operating voltage: 230 V
Mains frequency: 50 Hz
Operating mode: S1
Power P1: 0.34 kW
Power P2: 0.21 kW
RPM: 2,800 rpm

Pump capacity:



GTF 500

for sewage free wastewater
Art. no. 28 562

GTF 500 resistant

Resistant to:

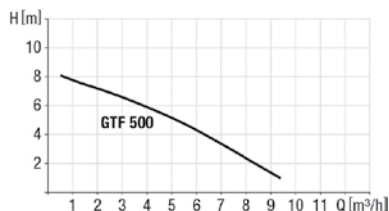
- Saline media
- Wastewater from softening units
- Wastewater containing condensate from heating systems

Art. no. 28 562C

Version:

Max. flow rate.: 10 m³/h
Max. pumping height: 8 m
Operating voltage: 230 V
Mains frequency: 50 Hz
Operating mode: S1
Power P1: 0.6 kW
Power P2: 0.36 kW
RPM: 2,800 rpm

Pump capacity:



GTF 1000

for sewage free wastewater
Art. no. 28 563

GTF 1000 resistant

Resistant to:

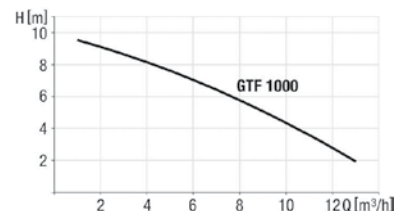
- Saline media
- Wastewater from softening units
- Wastewater containing condensate from heating systems

Art. no. 28 563C

Version:

Max. flow rate: 14.5 m³/h
Max. pumping height.: 10 m
Operating voltage: 230 V
Mains frequency: 50 Hz
Operating mode: S3
Input power P1: 1.27 kW
Input power P2: 0.73 kW
RPM: 2,800 rpm

Pump capacity:





Subject to technical modifications.

KESSEL AG

Bahnhofstraße 31 • 85101 Lenting (Germany)

www.kessel.com



ClimatePartner.com/14795-2301-1001

016-409 P24/SE 02/23