

HYDROTEC

DRAINAGE CHANNELS

SYSTEM HYDROblock[®]

Drainage channel for heavy loads



SYSTEM HYDROblock® Product benefits

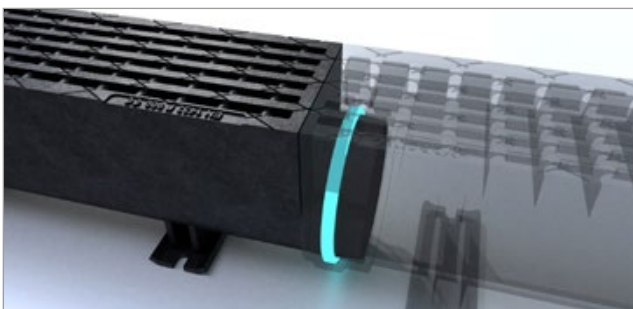
Drainage channel made of ductile iron

Drainage channel systems in heavy load areas must meet the highest level of safety. This requires complicated installation and substantial concrete encasement. Damage caused by dynamic horizontal forces is the most common reason for drainage channel breakdown. Due to its monolithic design and construction HYDROblock® ductile iron drainage channel is totally resistant to recurring dynamic forces up to and including Class F 900.



Perfect for crosswise traffic

Because of its monolithic design made of ductile iron, the safety slot system is perfect for heavy loads, crosswise traffic and is absolutely rattle free.



Smart seal system & pedestrian design

HYDROblock® drainage channels are connected by an integrated seal which enables an immediate watertight connection without additional sealing. HYDROblock® is also available with a slot width of 12 mm (standard slot width 22 mm).



SYSTEM HYDROblock®

Product benefits



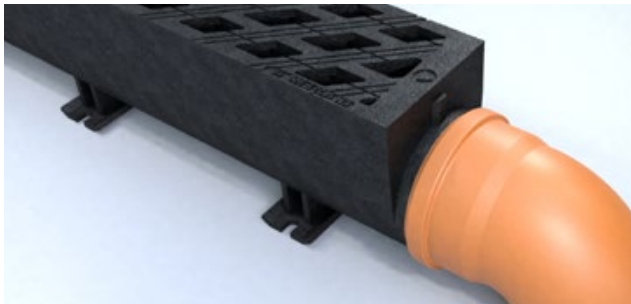
TYPE I and direct asphaltting/paving

HYDROblock® is certified as a TYPE I channel according EN 1433 which means the channel is able to take horizontal forces without the need for concrete encasement. It only requires a load bearing concrete foundation. The channel can be directly asphalted or paved.



Installation support / anchoring

The HYDROblock® feet can be used as an additional anchor point to the concrete foundation. Furthermore it facilitates the use of additional shims or clamps to level the HYDROblock® to a specific height.



Reliable sealing

The spigot end allows connection of commercially available plastic pipes.



Marking of the flow direction

The flow direction indicator ensures easier installation of the channel elements.

HYDROTEC

SYSTEM HYDROblock®

Installation areas



Industrial parks

SYSTEM HYDROblock®

Installation areas



Ports



entry and exit

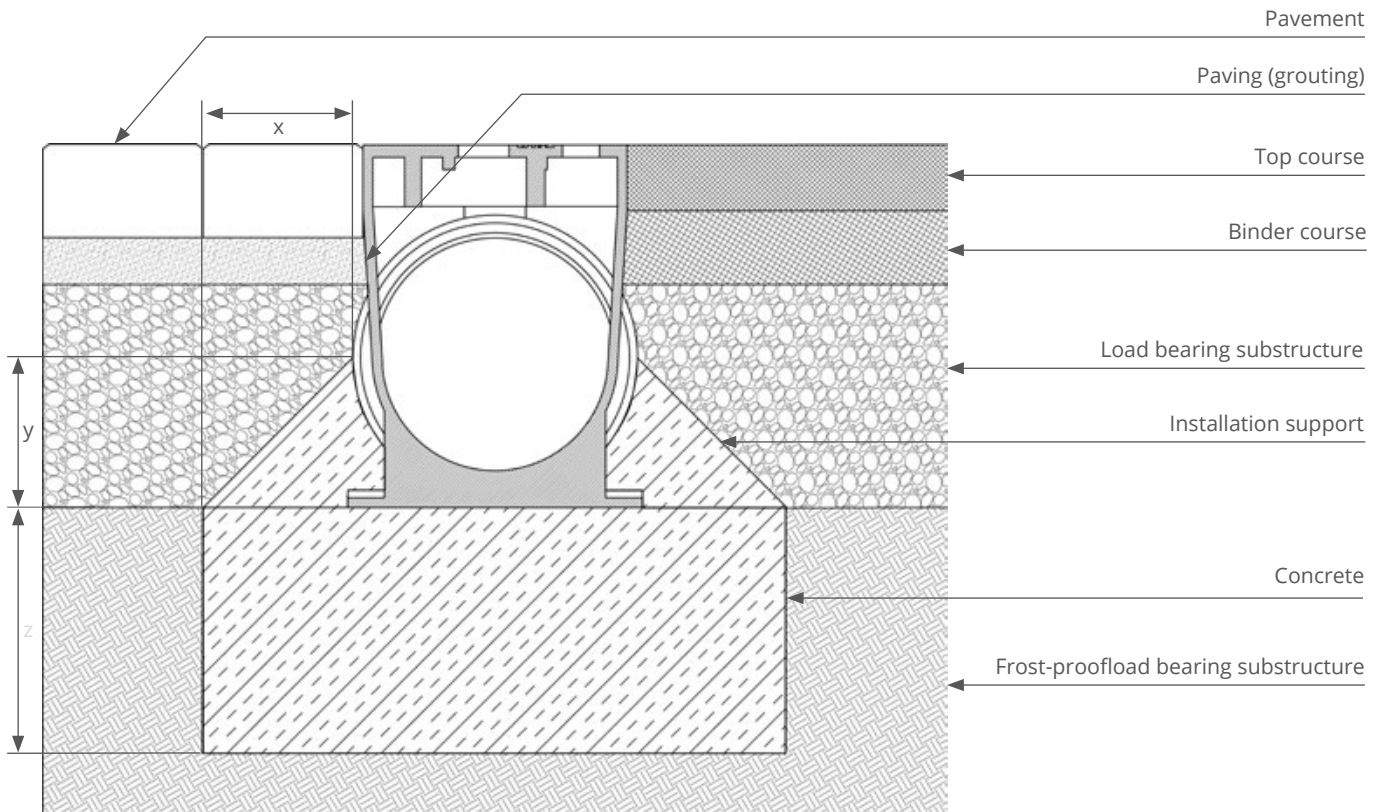


railway crossings

SYSTEM HYDROblock®

Installation instruction

ASPHALT / PAVEMENT



z (according to calculation)

D 400	20 cm concrete C25/30
E 600 / F 900	25 cm concrete C25/30

x y (according to calculation)

D 400	15 cm concrete C25/30
E 600 / F 900	20 cm concrete C25/30

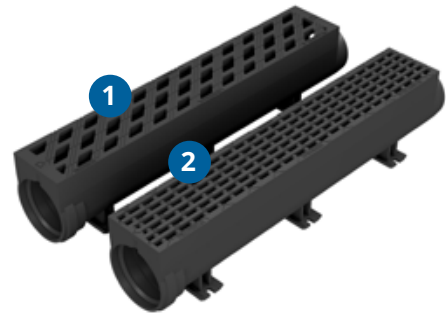
General notes

The installation instructions are only provided as a recommendation. The construction companies charged with installation can naturally incorporate any of their own improvements. The construction company is responsible for the correct installation of the drainage channels.

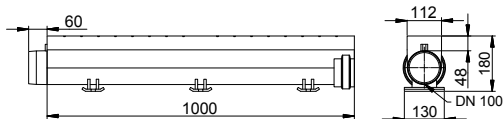
All installed parts must be examined before installation to ensure that they are undamaged. For reasons of liability never install damaged parts and contact the supplier immediately to submit a claim.

SYSTEM HYDROblock®

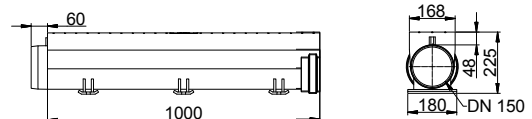
Basic elements



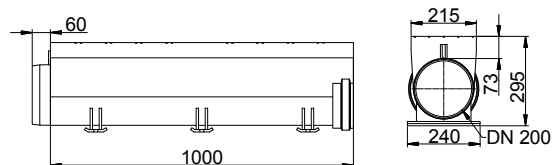
	Type	Art. No.	Class	Nominal width mm	Height mm	Length mm	Inlet area cm ² /m	kg	Pallet
1	Basic element	60060 050	F 900	100	180	1000	337	30,5	45
		60160 050		150	225		520	50,3	20
		60260 050		200	295		718	66,1	15
		60360 050		300	420		1190	110,0	6
2	Basic element in pedestrian design	60163 050	F 900	150	225	1000	380	53,0	20
		60263 050		200	295		566	71,4	15
		60360 0501		300	420		839	112,0	6



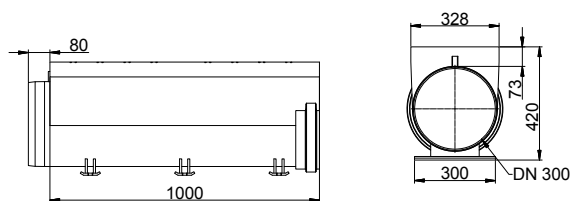
Nominal width 100 mm



Nominal width 150 mm



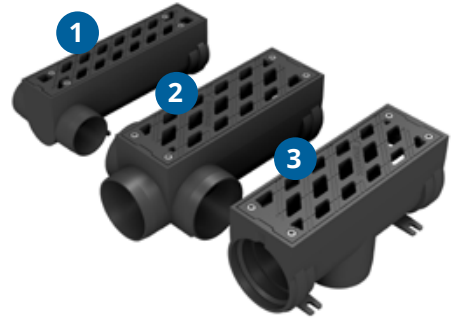
Nominal width 200 mm



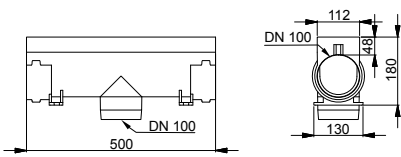
Nominal width 300 mm

SYSTEM HYDROblock®

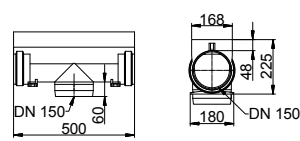
Special elements



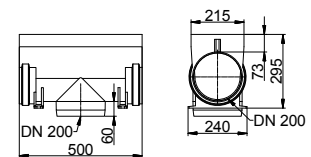
Type	Art. No.	Class	Nominal width mm	Height mm	Length mm	Inlet area cm ² /m	kg	Pallet
1 Outlet left/right	60060358	F 900	100	180	500	337	17,0	-
	60260358		200	295	500	718	45,0	
2 Outlet face side/left/right	60060458		100	180	500	337	17,0	
	60160458		150	255	500	520	32,0	
3 Vertical outlet	60060358		100	180	500	337	17,0	
	60160058		150	225	500	520	31,0	
	60260058		200	295	500	718	44,0	
	60360058		300	420	750	1190	105,0	



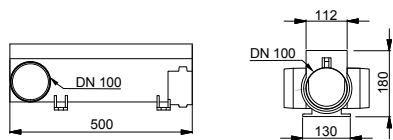
Vertical outlet - Nominal width 100 mm



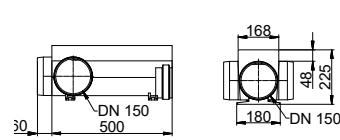
Vertical outlet - Nominal width 150 mm



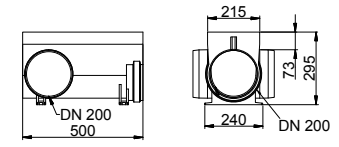
Vertical outlet - Nominal width 200 mm



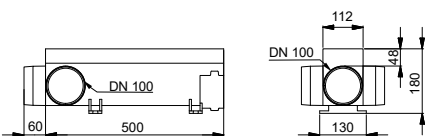
Outlet left/right - Nominal width 100 mm



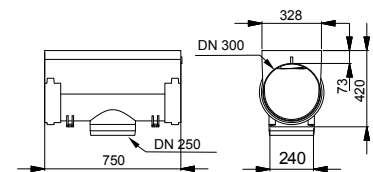
Outlet left/right - Nominal width 150 mm



Outlet left/right - Nominal width 200 mm



Outlet face side/left/right - Nominal width 100 mm



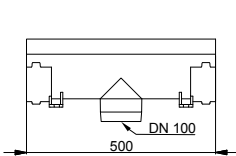
Vertical outlet - Nominal width 300 mm

SYSTEM HYDROblock®

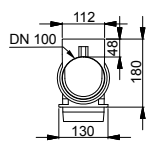
Special elements in pedestrian design



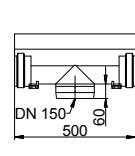
Type	Art. No.	Class	Nominal width mm	Height mm	Length mm	Inlet area cm ² /m	kg	Pallet
1 Outlet left/right	60263 358	F 900	200	295	500	566	45,0	-
2 Ablauf face side/left/right	60163 458		150	255	500	380	32,0	
3 Vertical outlet	60163 058		150	225	500	380	31,0	
	60263 058		200	295	500	566	71,4	
	60360 0582	300	420	750	839	96,0		



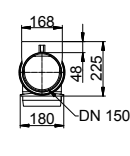
Vertical outlet - Nominal width 100 mm



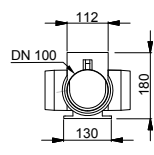
Vertical outlet - Nominal width 150 mm



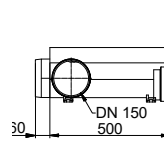
Vertical outlet - Nominal width 200 mm



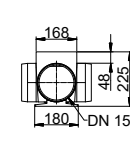
Outlet left/right - Nominal width 100 mm



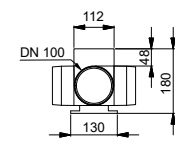
Outlet left/right - Nominal width 150 mm



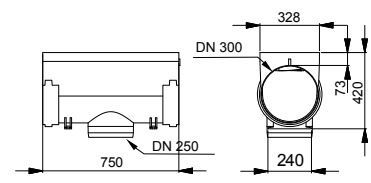
Outlet left/right - Nominal width 200 mm



Outlet face side/left/right - Nominal width 100 mm



Vertical outlet - Nominal width 300 mm

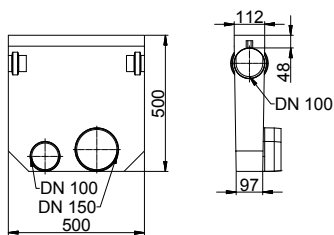


SYSTEM HYDROblock®

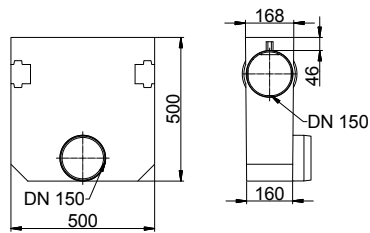
Feed boxes



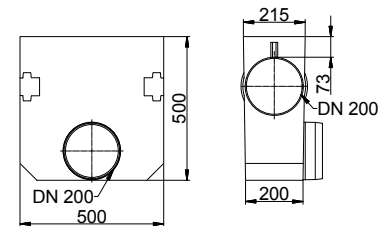
Type	Art. No.	Class	Nominal width mm	Height mm	Length mm	Inlet area cm ² /m	kg	Pallet
1 Feed box	60060008	F 900	100	500	500	337	38,0	-
	60160008		150			520	55,0	
	60260008		200			718	62,0	
2 Feed box in pedestrian design	60163008		150			380	54,0	
	60263008		200			566	63,6	



Nominal width 100 mm






Nominal width 150 mm



Nominal width 200 mm

SYSTEM HYDROblock®

Accessories

Type	Art. no.	Height mm	
End piece DN 100, socket end	7001210		 End piece
End piece DN 100, spigot end	7001211		
End piece DN 150, socket end	7001215		 Dirt strainer
End piece DN 150, spigot end	7001216		
End piece DN 200, socket end	7001220		
End piece DN 200, spigot end	7001230		
End piece DN 300, socket end	7001232		
End piece DN 300, spigot end	7001231		
Installation aid NW 100	7009923		 Installation aid
Installation aid NW 150 / 200 / 300	7009920		
HYDROblock 300 Dirt strainer for vertical outlet	0301533		



HYDROTEC Technologies AG
Düngstruper Strasse 46
27793 Wildeshausen
Germany

 office@hydrotec.com

 +49 4431 9355-0

 www.hydrotec.com

 +49 4431 9355-99