

HYDROTEC

DRAINAGE CHANNELS

SYSTEM MAXI PRO

High security channel with damping insert

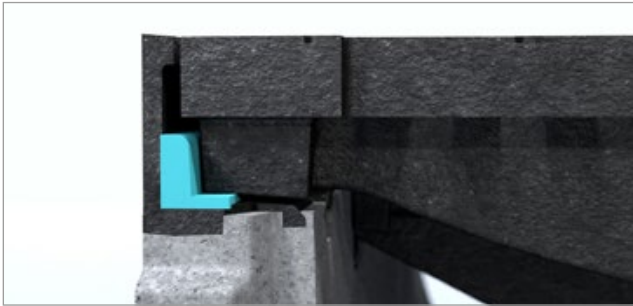


SYSTEM MAXI PRO

Product benefits

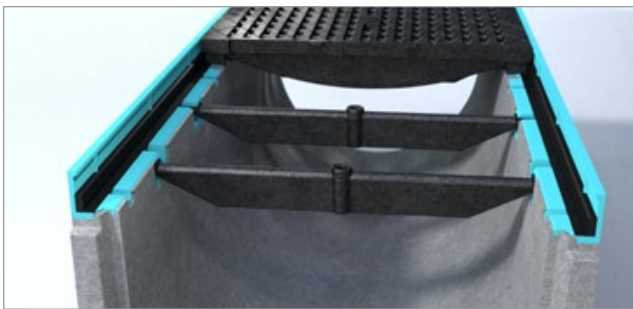
High security channel with damping insert

The drainage channel MAXI PRO is for high demands in the field of heavy goods traffic (industrial areas, air traffic areas, ports, etc.). The damping insert and the special screw bolt guaranteed a quiet position and high safety requirements. With the discharge capacity of up to approx. 80 l/s (nominal diameter 400 mm, length 1000 mm), even larger quantities of water are no problem for the system.



Noiseless and less maintenance

A noiseless position of the grating is ensured by the integrated damping insert and ensures less wear on the castings.



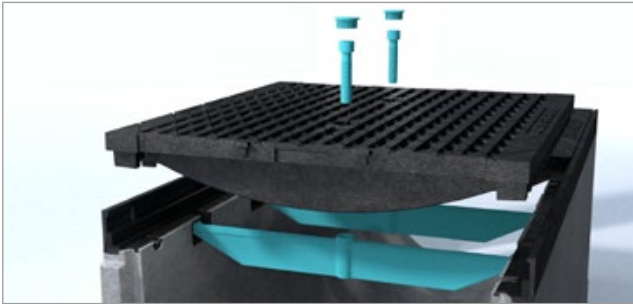
Edge protection

The 5 mm powerful ductile iron edge protection provides the highest stability in all load classes.



SYSTEM MAXI PRO

Product benefits



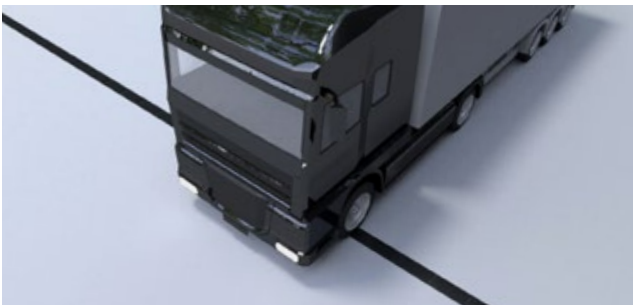
Special locking system

MAXI PRO ensures maximum traffic safety in all load classes thanks to two special screw bolts that firmly lock the grating and the channel body together.



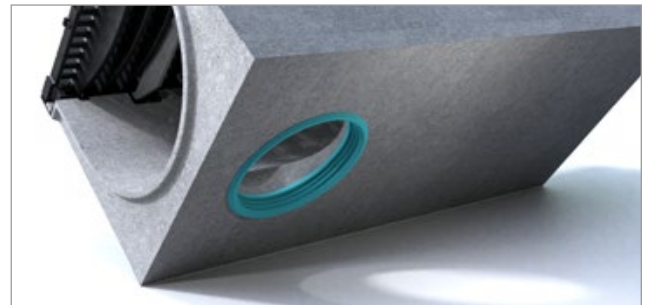
Protecting caps

Protecting caps for the locking system provide additional anti-slip protection for the screws and protection against soiling.



High load capacity

System for using in extreme demands and different aspects of safety (class F 900).



Vertical outlet

Liquid-tight connection for ground pipes.

SYSTEM MAXI PRO

Installation areas



SYSTEM MAXI PRO

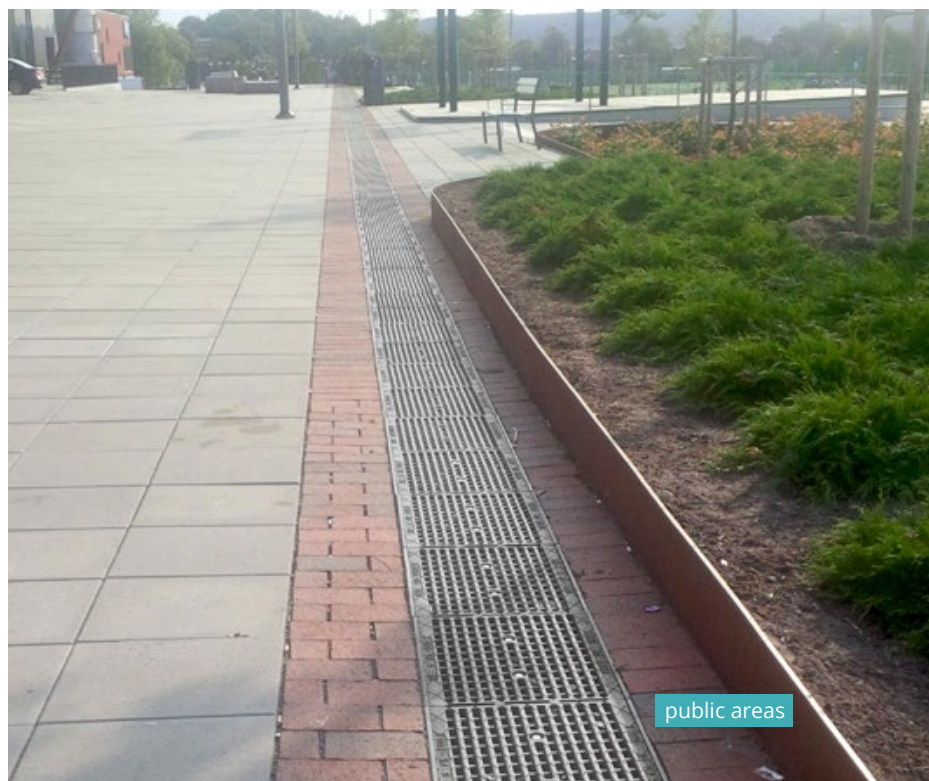
Installation areas



airports



industrial areas

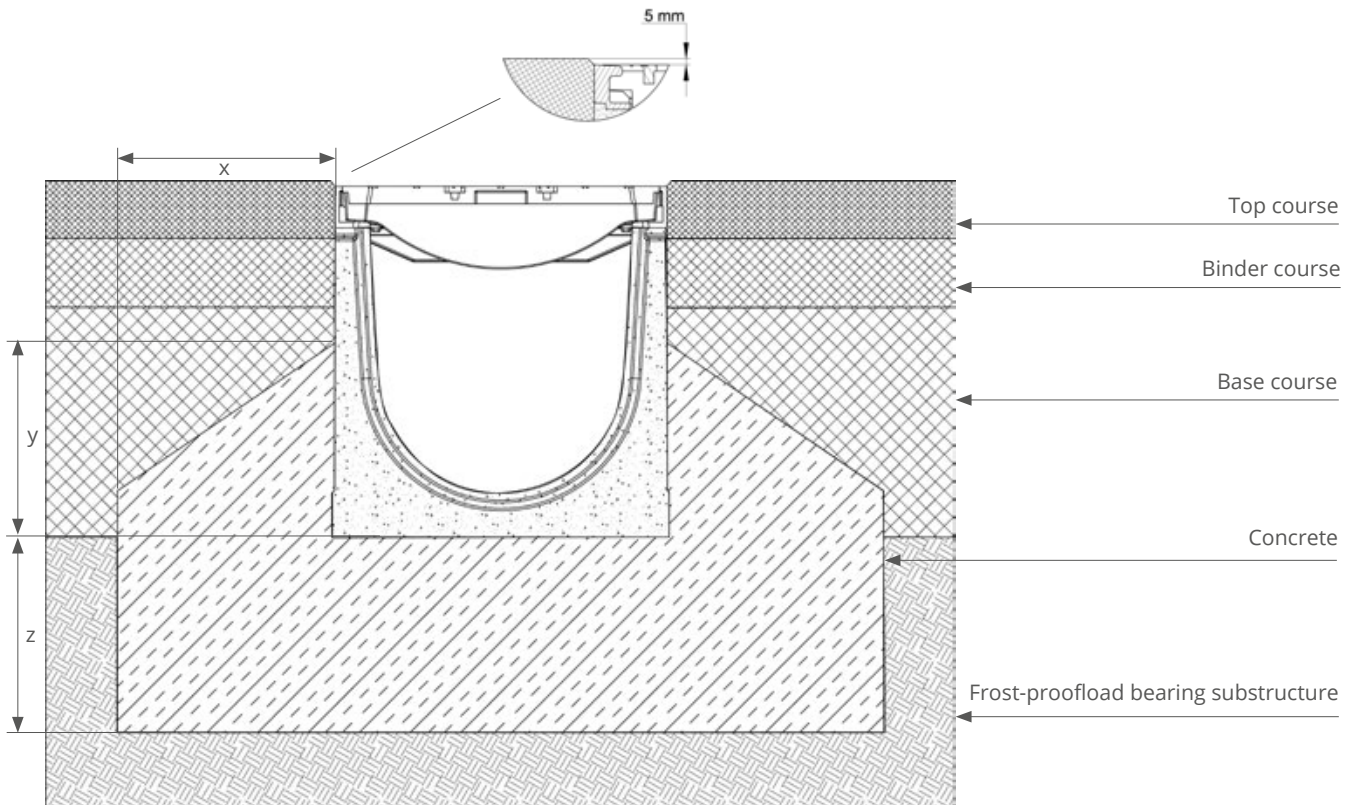


public areas

SYSTEM MAXI PRO

Installation instructions

ASPHALT



The edge protector in the drainage channel must be permanently seated approx. 5 mm lower than the adjoining surface.

x y z (according to calculation)

C 250	15 cm concrete C25/30
D 400	20 cm concrete C25/30
E 600 / F 900	25 cm concrete C25/30

General notes

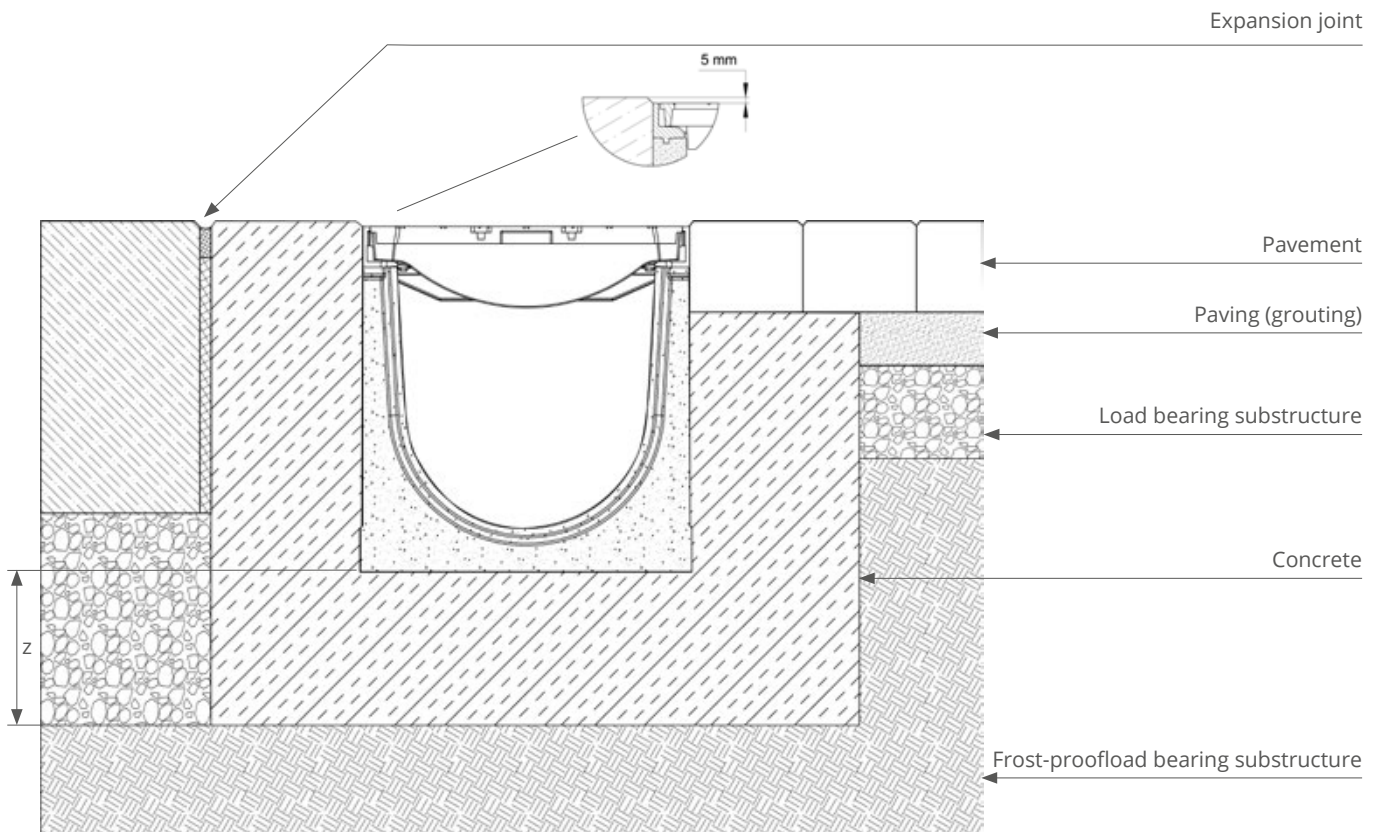
The installation instructions are only provided as a recommendation. The construction companies charged with installation can naturally incorporate any of their own improvements. The construction company is responsible for the correct installation of the drainage channels.

All installed parts must be examined before installation to ensure that they are undamaged. For reasons of liability never install damaged parts and contact the supplier immediately to submit a claim.

SYSTEM MAXI PRO

Installation instructions

ROADWAY CONCRETE / PAVEMENT



The edge protector in the drainage channel must be permanently seated approx. 5 mm lower than the adjoining surface.

The paving must be installed in such a way that dynamic shearing forces do not affect the channel sides. This is achieved by a non-positive bond of the paving.

z (according to calculation)

C 250	15 cm concrete C25/30
D 400	20 cm concrete C25/30
E 600 / F 900	25 cm concrete C25/30

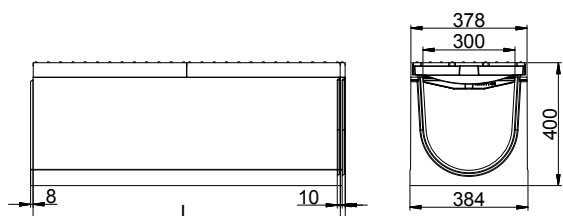
General notes

The installation instructions are only provided as a recommendation. The construction companies charged with installation can naturally incorporate any of their own improvements. The construction company is responsible for the correct installation of the drainage channels.

All installed parts must be examined before installation to ensure that they are undamaged. For reasons of liability never install damaged parts and contact the supplier immediately to submit a claim.

SYSTEM MAXI PRO 300

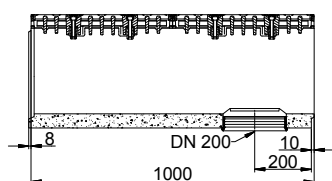
Class E 600



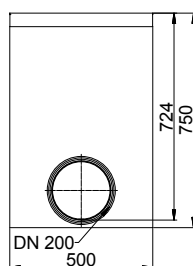
Basic element



Type	Art. No.	Class	Slot width mm	Height mm	Length mm	Inlet area cm ² /m	kg	Pallet
Basic element	663500 502	E 600	26/12	400	1000	1.120	196,3	6
	663500 552				500		98,5	12
Vertical outlet*	663500 572				1000		192,0	6
Feed box**	663500 082			750	500		142,0	4



Vertical outlet



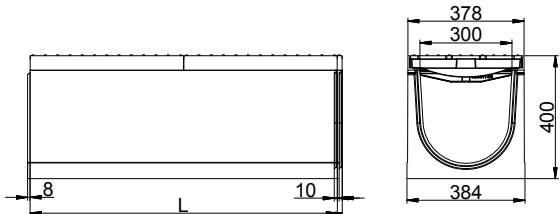
Feed box

*with integrated sealing ring Ø200

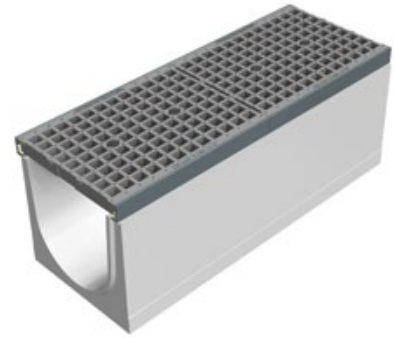
**with integrated sealing ring Ø200 and dirt catcher

SYSTEM MAXI PRO 300

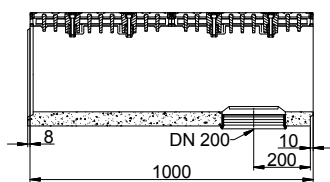
Class E 600



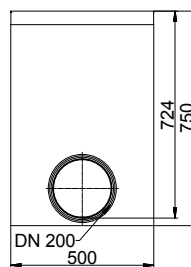
Basic element



Type	Art. No.	Class	Slot width mm	Height mm	Length mm	Inlet area cm ² /m	kg	Pallet
Basic element	623500 502	E 600	28/26	400	1000	1.576	193,3	6
	623500 552				500		96,5	12
Vertical outlet*	623500 572				1000		189,0	6
Feed box**	623500 082				750		500	139,0



Vertical outlet



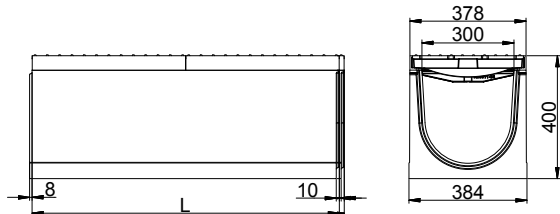
Feed box

*with integrated sealing ring Ø200

**with integrated sealing ring Ø200 and dirt catcher

SYSTEM MAXI PRO 300

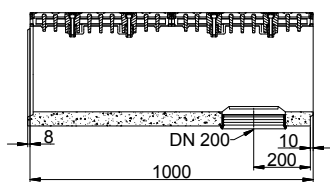
Class F 900



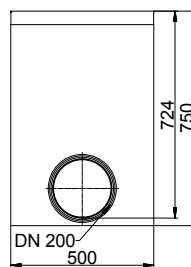
Basic element



Type	Art. No.	Class	Slot width mm	Height mm	Length mm	Inlet area cm ² /m	kg	Pallet
Basic element	663600 502	F 900	26/12	400	1000	1.120	205,5	6
	663600 552				500		103,0	12
Vertical outlet*	663600 572				1000		199,0	6
Feed box**	663600 082				750		500	149,0



Vertical outlet



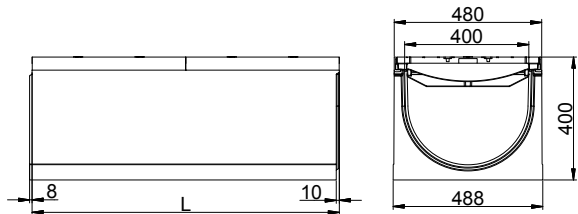
Feed box

*with integrated sealing ring Ø200

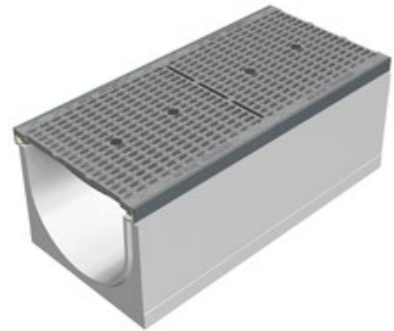
**with integrated sealing ring Ø200 and dirt catcher

SYSTEM MAXI PRO 400

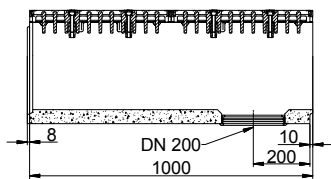
Class E 600



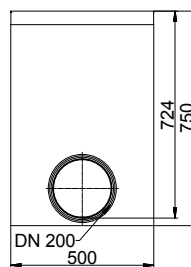
Basic element



Type	Art. No.	Class	Slot width mm	Height mm	Length mm	Inlet area cm ² /m	kg	Pallet
Basic element	664500 502	E 600	26/12	400	1000	1.225	252,0	4
	664500 552				500		126,0	8
Vertical outlet*	664500 572				1000		248,0	4
Feed box**	664500 082			750	500		170,0	4



Vertical outlet



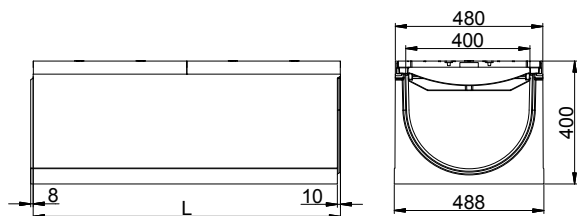
Feed box

*with integrated sealing ring Ø200

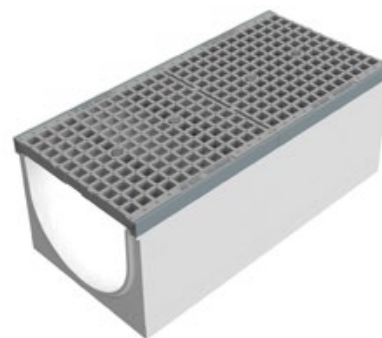
**with integrated sealing ring Ø200 and dirt catcher

SYSTEM MAXI PRO 400

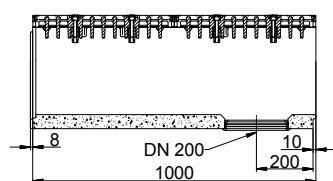
Class E 600



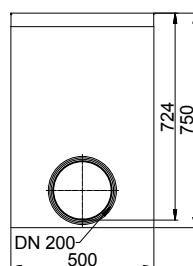
Basic element



Type	Art. No.	Class	Slot width mm	Height mm	Length mm	Inlet area cm ² /m	kg	Pallet
Basic element	624500 502	E 600	26/12	400	1000	1.900	249,0	4
	624500 552				500		123,0	8
Vertical outlet*	624500 572				1000		245,0	4
Feed box**	624500 082			750	500		167,0	4



Vertical outlet



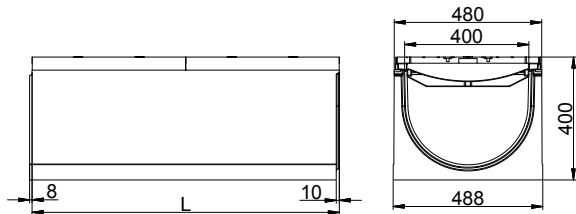
Feed box

*with integrated sealing ring Ø200

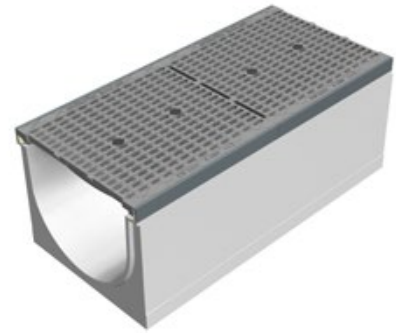
**with integrated sealing ring Ø200 and dirt catcher

SYSTEM MAXI PRO 400

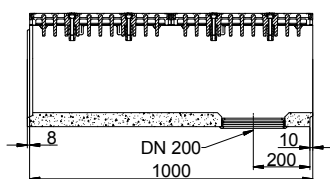
Class F 900



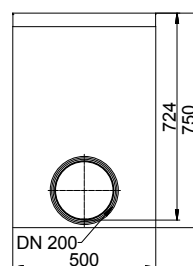
Basic element



Type	Art. No.	Class	Slot width mm	Height mm	Length mm	Inlet area cm ² /m	kg	Pallet
Basic element	664600 502	F 900	26/12	400	1000	1.225	261,0	4
	664600 552				500		130,5	8
Vertical outlet*	664600 572				1000		257,0	4
Feed box**	664600 082				750		500	180,0



Vertical outlet



Feed box

*with integrated sealing ring Ø200

**with integrated sealing ring Ø200 and dirt catcher

SYSTEM MAXI PRO

Accessories


Type	Art. No.	Height mm	
End piece cast iron (MAXI PRO 300)	7001311		<p>End piece</p>
Upper part for socket key (multi-tooth)	7009908		
Upper part for socket key	7009909		<p>Upper part for socket key</p> <p>End piece cast iron pipe connection</p>
End piece cast iron - Pipe connection DN 200 (MAXI PRO 300)	7001380		
End piece iron (MAXI PRO 400)	7001400		
End piece cast iron - Pipe connection DN 200 (MAXI PRO 400)	7001480		



HYDROTEC Technologies AG
Düngstruper Strasse 46
27793 Wildeshausen
Germany

 office@hydrotec.com

 www.hydrotec.com

 +49 4431 9355-0

 +49 4431 9355-99