

HYDROTEC

DRAINAGE CHANNELS

SYSTEM MAXI*pur*

with damping PUR insert



SYSTEM MAXI*pur*

Product benefits

The all-rounder in drainage

The MAXI system is an all-rounder among drainage channels. The drainage channel with the encased PUR grating withstands loads up to load class D 400 and is therefore versatile for drainage with lower requirements up to higher requirements. The MAXI system is ideal for traffic areas and also for the drainage of cycle paths and pedestrian walkways thanks to the screwless locking system, the longitudinal thrust protection and the strong cast iron edge protection.



Insert highlighted in colour

Rattle-free drainage

The cast-iron cover is equipped with a firmly encapsulated polyurethane insert according to the proven HYDRO*pur*® system. The PUR coating of the grating prevents contact of cast grating on cast frame and thus ensures rattle-free operation.



SYSTEM MAXI*pur*

Product benefits



High abrasion resistance

The damping PUR coating ensures better force compensation and significantly lower abrasion compared to the DIN insert. Depending on the load on the channel, longer operating times are possible with this feature.



Exchange

The PUR grating can be exchanged for other gratings of the MAXI system without much effort.



High load capacity

The MAXI system with the encased PUR cover withstands loads up to class D 400 and is therefore ideally suited for traffic areas but also for the drainage of cycle paths and pedestrian walkways.



Good resistance

The PUR insert fulfils the following resistances:

- frost and de-icing salt resistant
- chemically resistant
- mineral oil resistant

SYSTEM MAXI*pur*

Product benefits



Longitudinal restraints

With 8 safety points per meter, braking forces are effectively absorbed and discharged.



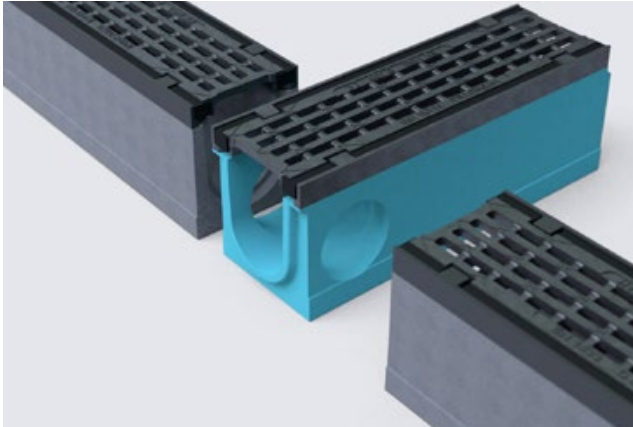
Screwless locking system

The gratings are equipped with a simple locking system, which are locked and unlocked using the installation bar (accessories).



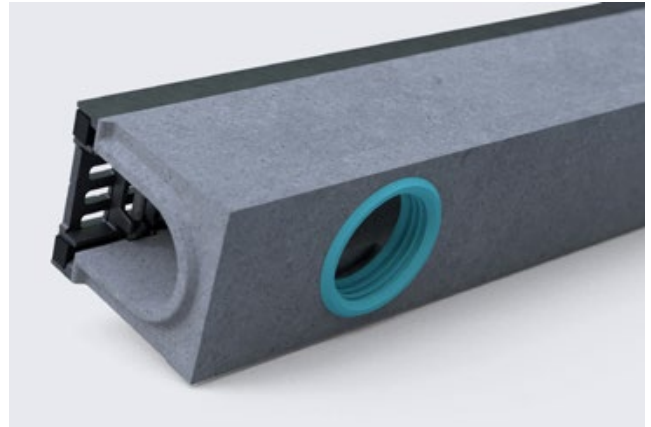
SYSTEM MAXI*pur*

Product benefits



Special element

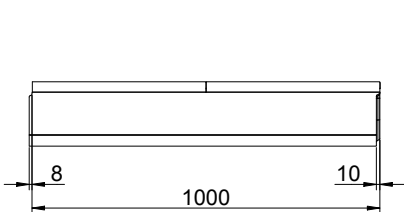
The special element permits extension of the channel run with the required branches. It can also be fitted as a corner or T element.



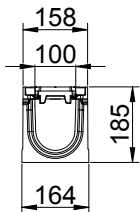
Vertical outlet

Liquid-tight connection for ground pipes.

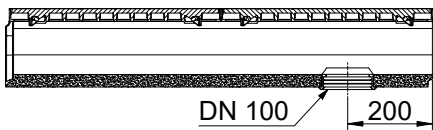
SYSTEM MAXI*pur* 100
Class D 400, DIN EN 1433



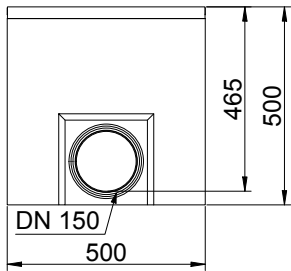
Basic element



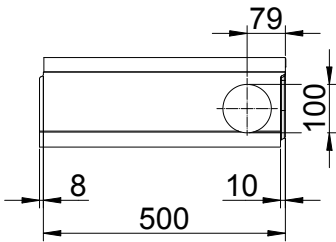
| Type | Art. No. | Class | Slot width mm | Height mm | Length mm | Inlet area cm²/m | kg | Pallet |
|------------------|-------------------|-------|------------------|--------------|--------------|---------------------|------|--------|
| | | | | | | | | |
| Basic element | 61144 050 | D 400 | 30/13 | 185 | 1000 | 182 | 53,5 | 24 |
| | 61144 055 | | | | 500 | | 29,0 | 48 |
| Vertical outlet* | 61144 0507 | | | 185 | 1000 | | 53,5 | 24 |
| Special element | 61144 056 | | | 185 | 500 | | 27,0 | - |
| Feed box | 61144 008 | | | 500 | | | 56,0 | 10 |
| PUR grating | 03412 0103 | | | - | 500 | | 5,0 | - |



Vertical outlet



Feed box

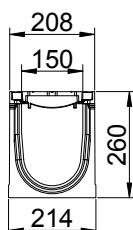
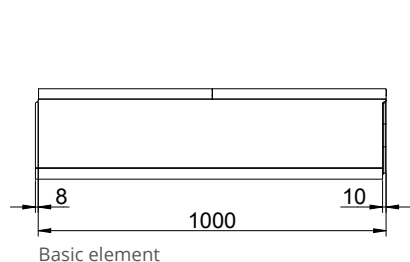


Special element

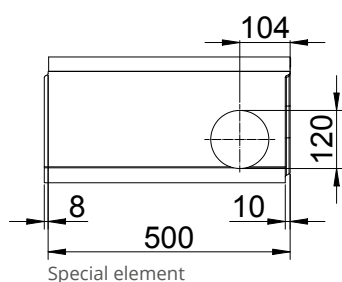
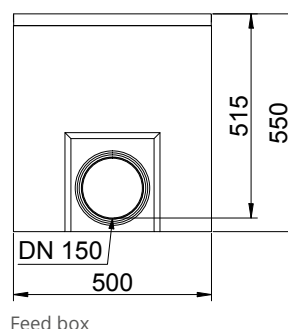
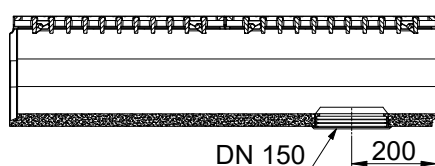
*with integrated sealing ring Ø100

SYSTEM MAXIpur 150

Class D 400, DIN EN 1433

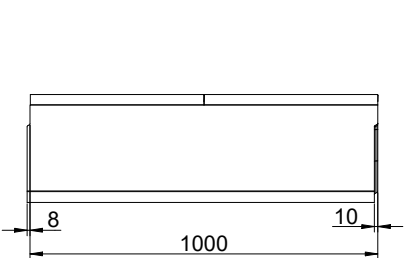


| Type | Art. No. | Class | Slot width mm | Height mm | Length mm | Inlet area cm²/m | kg | Pallet |
|------------------|-------------------|-------|------------------|--------------|--------------|---------------------|------|--------|
| | | | | | | | | |
| Basic element | 61544 050 | D 400 | 28/16 | 260 | 1000 | 231 | 79,6 | 20 |
| | 61544 055 | | | | 500 | | 39,8 | 40 |
| Vertical outlet* | 61544 0507 | | | 260 | 1000 | | 71,0 | 20 |
| Special element | 61544 056 | | | 260 | 500 | | 38,0 | - |
| Feed box | 61544 008 | | | 550 | | | 70,0 | 8 |
| PUR grating | 03422 0103 | | | - | 500 | | 5,0 | - |

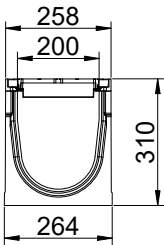


*with integrated sealing ring Ø150

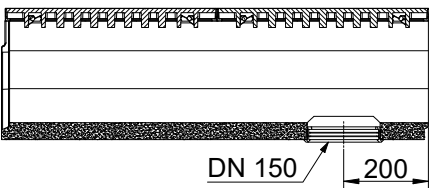
SYSTEM MAXI*pur* 200
Class D 400, DIN EN 1433



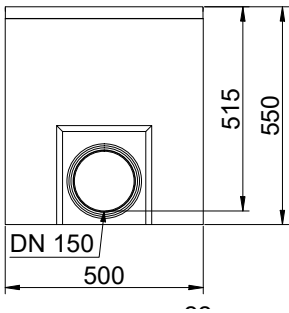
Basic element



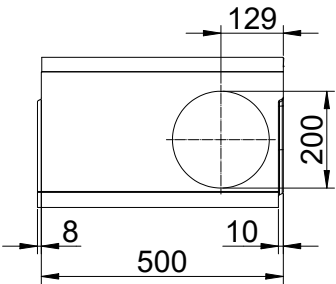
| Type | Art. No. | Class | Slot width mm | Height mm | Length mm | Inlet area cm²/m | kg | Pallet |
|------------------|-------------------|-------|------------------|--------------|--------------|---------------------|-------|--------|
| | | | | | | | | |
| Basic element | 61244 050 | D 400 | 22/12 | 310 | 1000 | 524 | 105,0 | 12 |
| | 61244 055 | | | | 500 | | 54,5 | 24 |
| Vertical outlet* | 61244 0507 | | | 310 | 1000 | | 103,5 | 12 |
| Special element | 61244 056 | | | 310 | 500 | | 52,5 | - |
| Feed box | 61244 008 | | | 550 | | | 71,5 | 6 |
| PUR grating | 03432 0103 | | | - | 500 | | 12,5 | - |



Vertical outlet



Feed box



Special element


*with integrated sealing ring Ø150




HYDROTEC Technologies AG
Düngstruper Strasse 46
27793 Wildeshausen
Germany

 office@hydrotec.com

 www.hydrotec.com

 +49 4431 9355-0

 +49 4431 9355-99